

# SAFETY MADE OF METAL MESH

BALUSTRADES | ROLLER SHUTTERS | FALL GUARD PROTECTIONS





# SAFETY MEETS DESIGN

All balustrade applications by GKD focus on two key aspects: design and safety. Whether you choose individually designed balustrades with GKD metal mesh or prefer our SAFEMESH modular system, you are sure to create visual and functional highlights in your building concept.

The use of various mesh types always allows a perfectly tailored solution to be found for individually designed balustrades. Our flexible meshes easily follow the gradient of staircases.

With our SAFEMESH balustrade system, we also offer a complete system that comprises metal fabric panels with external frame, point fittings, posts and handrails. The exceptional aesthetics, coupled with reliable safety, minimum care/maintenance and rugged durability, make SAFEMESH the ideal alternative – both for new buildings and renovation projects. The system has been successfully tested as per the Uniform Technical Building Regulations Directive (ETB) for fall protection applications.

---

## ADVANTAGES AT A GLANCE:

- Durable and low-maintenance thanks to the use of stainless steel 1.4404
  - High-grade design with a variety of mesh types
  - Degree of transparency as required
  - Robust
  - Suitable for indoor and outdoor applications
  - Individually designed or as a complete SAFEMESH GKD system
- 



*Title + image 4: The Art Institute of Chicago, Illinois, architect: Renzo Piano, France, mesh: PC-Tigris, ©GKD/Apple Group*

# SAFELY ENCAPSULATED IN METAL MESH

Roller shutters made of GKD metal mesh impress with both their aesthetics and functionality. They effectively protect segregated areas from unauthorised access. Depending on requirements, the GKD metal fabric can be used primarily as a visual access barrier or be equipped with an optional self-locking system to offer effective theft protection. The optimised lateral guides ensure that the grid sections slide down smoothly. All roller shutters made of GKD metal mesh are motorised and can be operated fully automatically or

individually. In addition to this, the low-maintenance motors are easy to connect to all common building management systems. Depending on the model chosen, the systems are suitable for indoor or outdoor use. Thanks to their transparent appearance, our GKD metal meshes grant a view of the areas they cover and thereby help create an overall sense of space. A matched lighting concept allows these transparent aesthetics to be emphasised even more. The degree of transparency can be individually defined based on the density of the mesh



Roller shutter in a canteen, Münster, architect: Vervoorts & Schindler Architekten, Bochum, mesh: Tigris, ©GKD/Holtkötter

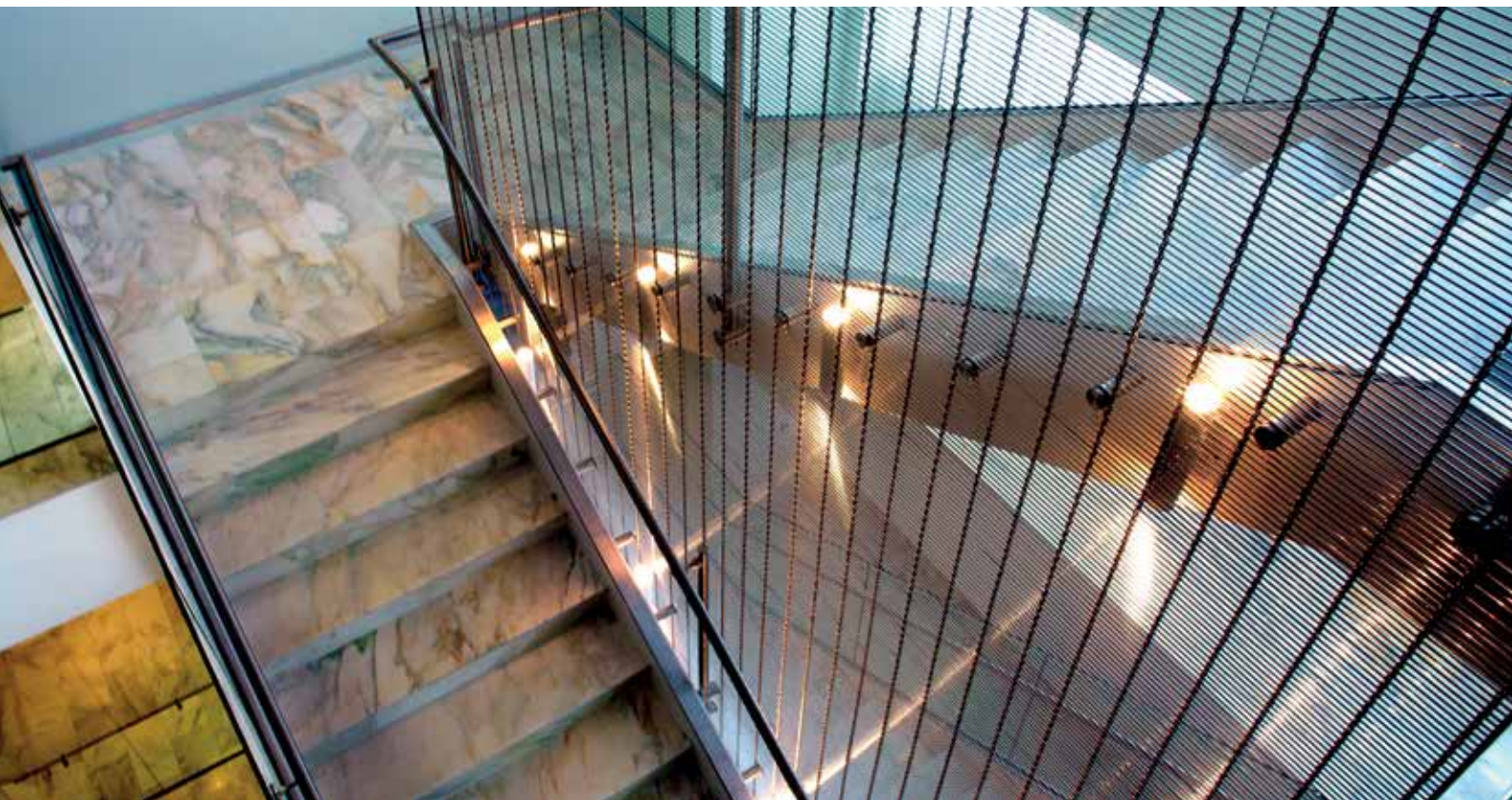
used. As a system supplier, we support our customers from the initial concept phase, through the design phase and weaving process, all the way up to delivery and installation of our roller shutters made of GKD metal fabric. As they employ corrosion-free stainless steel, these systems are easy to clean using standard commercial non-abrasive cleaners. Despite the fact that they move effortlessly, the roller shutters made of GKD metal mesh are solid and durable building components.

---

**ADVANTAGES AT A GLANCE:**

- Ideal for shops, bars and restaurants
  - Various mesh types
  - Degree of transparency as required
  - Widths of 1 to 8 m and a maximum height of 4 m
  - Suitable for indoor and outdoor applications
  - CE marking
- 





Images 1-3: Phelps Dunbar, Baton Rouge, Louisiana, architect: Gensler, mesh: Futura 3110, ©GKD/Shannon Sheridan

# WOVEN PROTECTION FOR MODERN STAIRCASES

Whether as an enclosure or tensioned in the centre of a stairwell, stainless steel meshes from GKD offer protection and safety for both indoor and outdoor staircases. With a width of up to 8 m and tensioned over several floors, the meshes offer protection over a large area without any annoying joints. In the process, different mesh types meet various requirements with regard to transparency and robustness. Due to their structure, the metal fabrics can be shaped in cable direction and are even capable of cladding circular building structures virtually seamlessly. With tailor-made fastening solutions, the mesh panels are optimally integrated into the building structure, thereby creating a high-grade, protective shell.



---

## ADVANTAGES AT A GLANCE:

- Can be manufactured with lengths up to 8 m
  - High-grade design with a variety of mesh types
  - Degree of transparency as required
  - Straight or curved cladding possible
  - Individual fastening solutions
  - Robust
  - Suitable for indoor and outdoor applications
- 





WORLD WIDE WEAVE

**GKD – GEBR. KUFFERATH AG**  
Metallweberstraße 46  
52353 Düren  
Germany  
T +49 (0) 2421 803 - 0  
F +49 (0) 2421 803 - 227  
creativeweave@gkd.de  
www.gkd.de

**GKD-USA, INC.**  
825 Chesapeake Drive  
Cambridge, MD 21613  
USA  
T +1 410 221 0542  
F +1 410 221 0544  
sales@gkdusa.com  
www.gkdusa.com

**GKD (UK) LTD.**  
Genesis 4, Church Lane  
Heslington York  
North Yorkshire YO10 5DQ  
Great Britain  
T +44 (0) 1904 420 500  
F +44 (0) 1904 420 509  
sales.at.gkd.uk.com  
www.gkd.uk.com

**GKD (BEIJING) IND. TECHNOLOGIES CO., LTD.**  
No. 11, Jinma Industrial Zone  
Middle Road, Shunyi District  
101318 Beijing  
P.R. China  
T +86 10 516 596 18  
F +86 10 694 976 01  
gkd@gkd-china.com  
www.gkd-china.com

**GKD TEAM FRANCE SARL**  
Zac du Grand Pont, Rue Gutenberg  
13640 La Roque d'Anthéron  
France  
T +33 (0) 442 50 70 29  
F +33 (0) 442 50 71 40  
teamfrance@gkd.fr  
www.gkd.de

**FINSA ARQUITECTURA, S.L.**  
Joan Monpeó 144  
08223 Barcelona  
Spain  
T +34 93 786 1861  
F +34 93 785 8359  
finsa@finsa-arquitectura.com  
www.finsa-arquitectura.com

**GKD BUISMET (PTY) LTD.**  
Aureus Ext. 3, Cnr. Fiat and Chrysler Streets  
RSA-1759 Randfontein  
South Africa  
P.O. Box 6175  
RSA-1767 Greenhills  
South Africa  
T +27 (0) 11 412 47 70  
F +27 (0) 11 412 48 23  
gkdrsa@gkd.co.za  
www.gkd.co.za

**GKD MIDDLE EAST**  
Office 1308 Fortune Tower  
Jumeirah Lakes Towers  
P.O. Box 112410  
Dubai  
United Arab Emirates  
T +971 4 375 70 70  
F +971 4 427 04 20  
dubai@gkd.de

**GKD INDIA LTD.**  
52, Industrial Area Jhotwara  
Jaipur - 302012, Rajasthan  
India  
T +91 141 710 51 00  
F +91 141 710 51 99  
query@gkd-india.com  
www.gkd-india.com

**GKD LatAm S.A.**  
La Estera 418  
Lampa, Santiago  
Chile  
T +56 2 2489 1040  
F +56 2 2489 1031  
info@gkd-latam.com  
www.gkd-latam.com