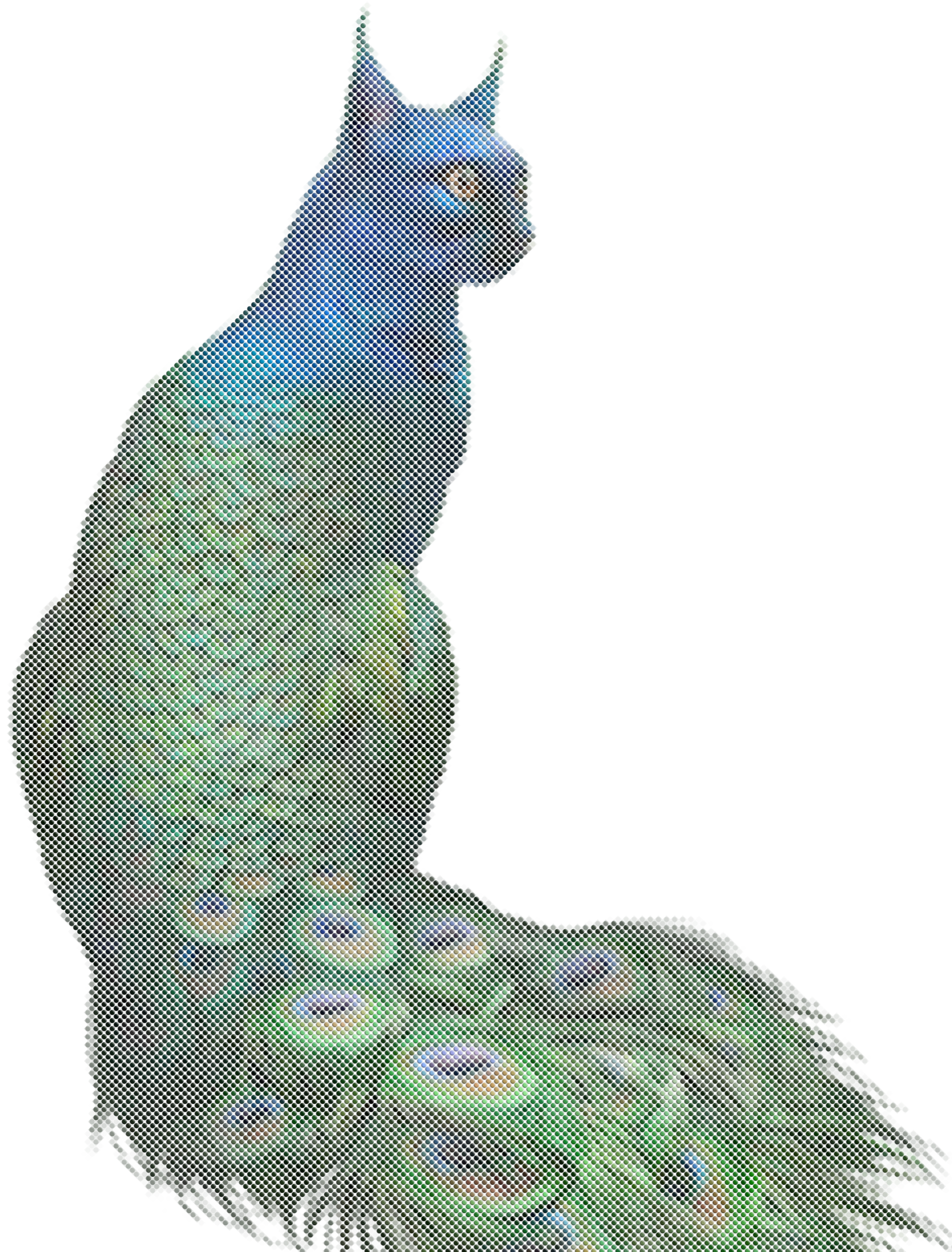


PRODUCT  
SHEET

# DEDOTS



‘ We are storytellers, from  
fantasy to factory ’

#1

#### About Redfort

At Redfort, we believe in 21st century craftsmanship for architecture. We are committed to working with sustainable and durable materials, offering affordable pricing and creating tailor made products to serve both small and large-scale projects.

#### Corporate Social Responsibility

In 2008, we introduced our first product, Lace Fence. As demand grew, we set up our own production facility in Bangalore, India, to ensure the sustainable and responsible production of all our materials. Since launching, we have taken every necessary step to ensure our factory employees are well trained and provided with schooling, social security and pension funds. And in 2009, we were awarded The Toon van Tuijl Design Award for our efforts. The award assesses employee working and living conditions, and evaluates the impact a business has on the economic growth and social conditions of developing countries. Transparency is at the core of everything we do: what, where, how and when our products are made remain integral to the sustainable and socially responsible production our practice.

‘ Adding colour to the world,  
one Dot at the time ’

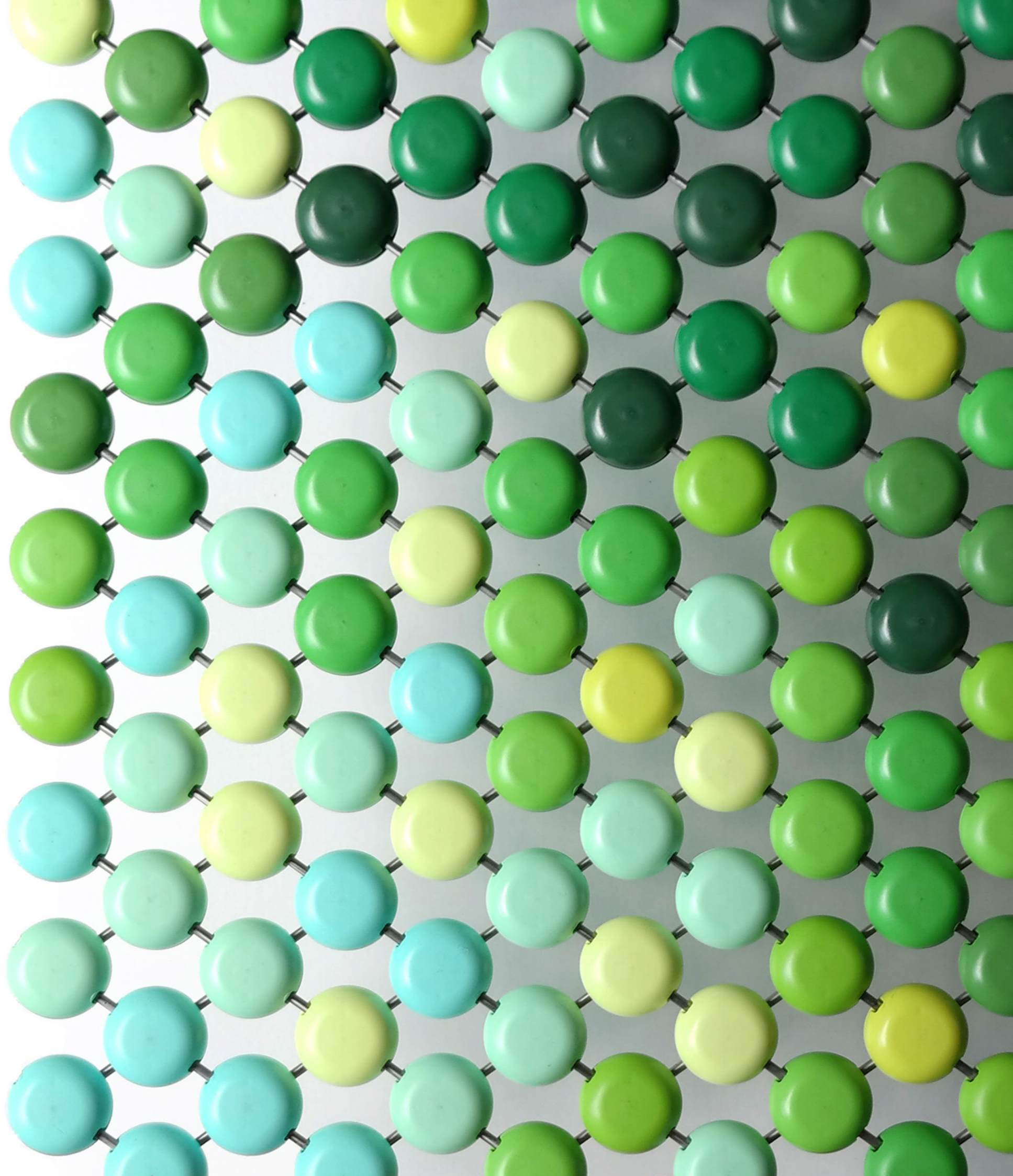
## #2

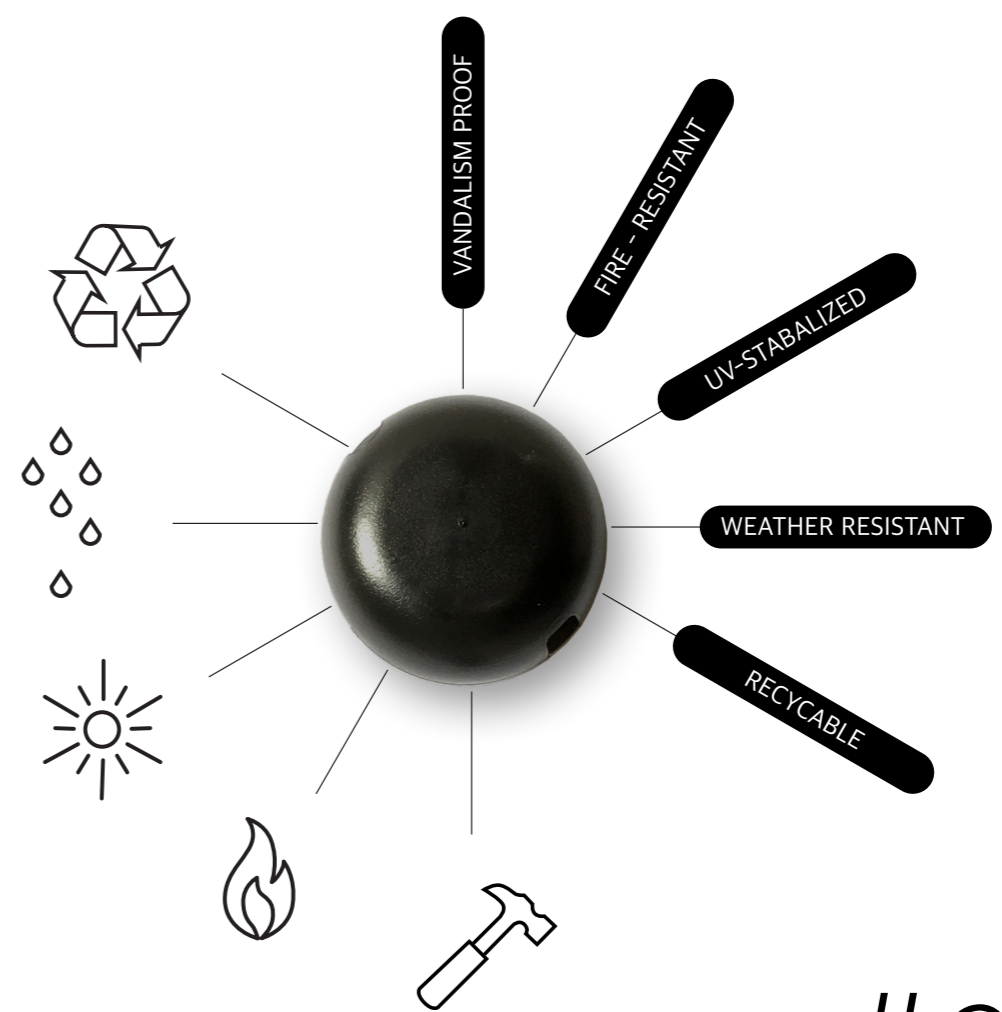
### Dedots

Picture a canvas on which you can depict the grandest stories of your dreams. Vivid imagery, intricate patterns, bold graphic art; with DEDOTS architectural fabrics this is all possible. And the system is simple: multiple coloured, 3D DOTS mounted onto a mesh panel to serve as a fence, ceiling, railing, or more. Whether you're looking to liven up a staircase with a custom designed pattern or install a statement-making screen around a sports park, DEDOTS brings unique character to any surface and every setting.

### Contribute to a more sustainable world

Sustainability is essential, and we commit to working with all our materials as efficiently as possible. That is why we set up our return programme, which enables you to recycle both the PC-ASA thermoplastic and mesh base-material into the product chain, giving them a second lease of life. In this way, no material goes to waste.





# #3

## Colour

Colour is the most defining feature of a DEDOTS graphic. There are 148 standard colours and we can have any PMS color made on request.

The DOTS are manufactured to meet the highest possible standard and fit a wide array of uses.

**Vandalism proof** Due to the high tensile strength and irreversible internal lock DEDOTS can stand intensive use.

**Fire resistant** DEDOTS has the best classification of fire resistance. V0 according to the UL94-test. If required DEDOTS can be produced from PA6 FR with a C,s2,d0 classification according to EN13501-1.

**Perfect weatherability** According to the UL746C-test, DEDOTS has an F1 classification.

**UV stabilized** The plastic is through coloured and has an UV blocker.

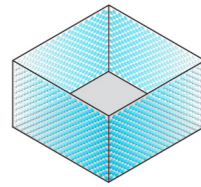
**Recyclable** Due to our return-program we are able to recycle 90% of our product. Furthermore the DOTS can be produced from 100% recycled plastic.

‘ Tell unique stories through a spatial intervention ’

# #4

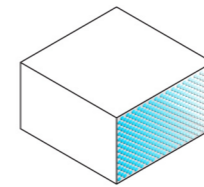
## The Dots

Aside from its aesthetic properties, DEDOTS is manufactured to fit a wide array of indoor and outdoor uses. For example; ensuring protection from the sun, providing privacy, improving acoustics, or acting as fall-through protection.



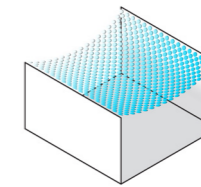
Enclosure

The density of the DEDOTS pattern can ensure a wind reduction on sports fields. The irreversible internal lock can withstand high-impact forces.



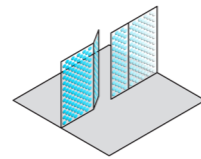
Facade

Due to its open character the fabric allows natural ventilation in, for example, parking garages. The UV-stabilized plastic guarantees a long lifespan.



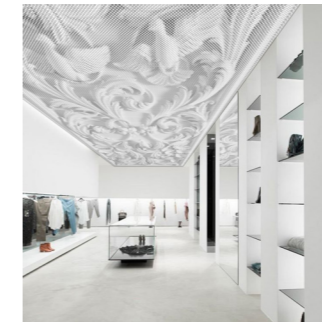
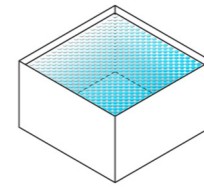
Net

Because no substructure is required for the nets, large spans can be made.



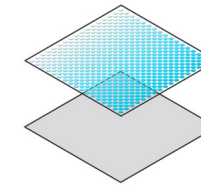
Gate

The UV-stabilized and through colored plastic makes DEDOTS suitable for outdoor use. The DOTS are designed to be resilient and resistant to vandalism.



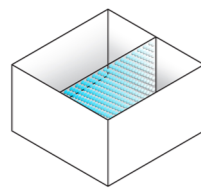
Ceiling

The special ceiling panels make it possible to create a seamless DEDOTS ceiling. The panels give a significant acoustic improvement.

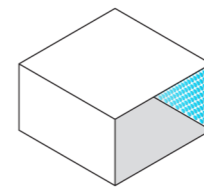


Shading

Depending on the density of the pattern, DEDOTS can act as a sun shield, providing shade in buildings or sports parks, among other settings.

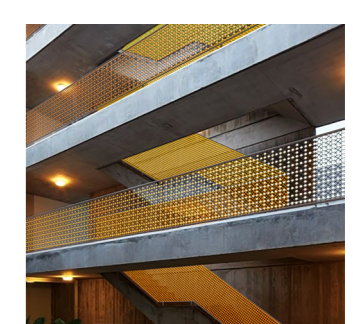
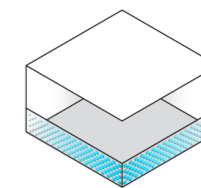


DEDOTS is two-sided and therefore suitable as room dividers. It is possible to supply dedots with a fire classification V0 according to UL94 or C, s2,d0 according to EN 13501-1



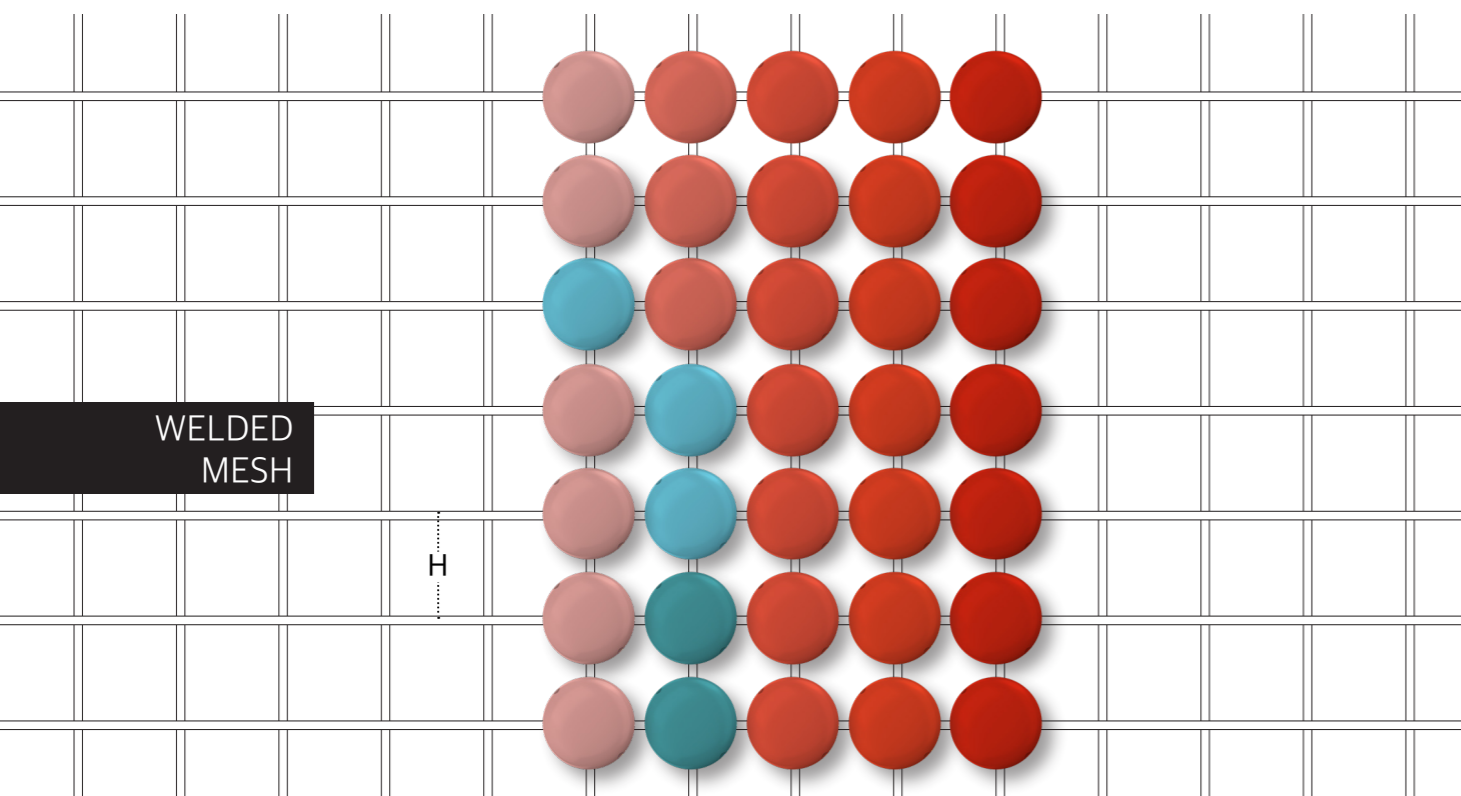
Wall

The wall panels give significant acoustic improvement. It is possible to supply dedots with a fire classification V0 according to UL94 or C, s2,d0 according to EN 13501-1.



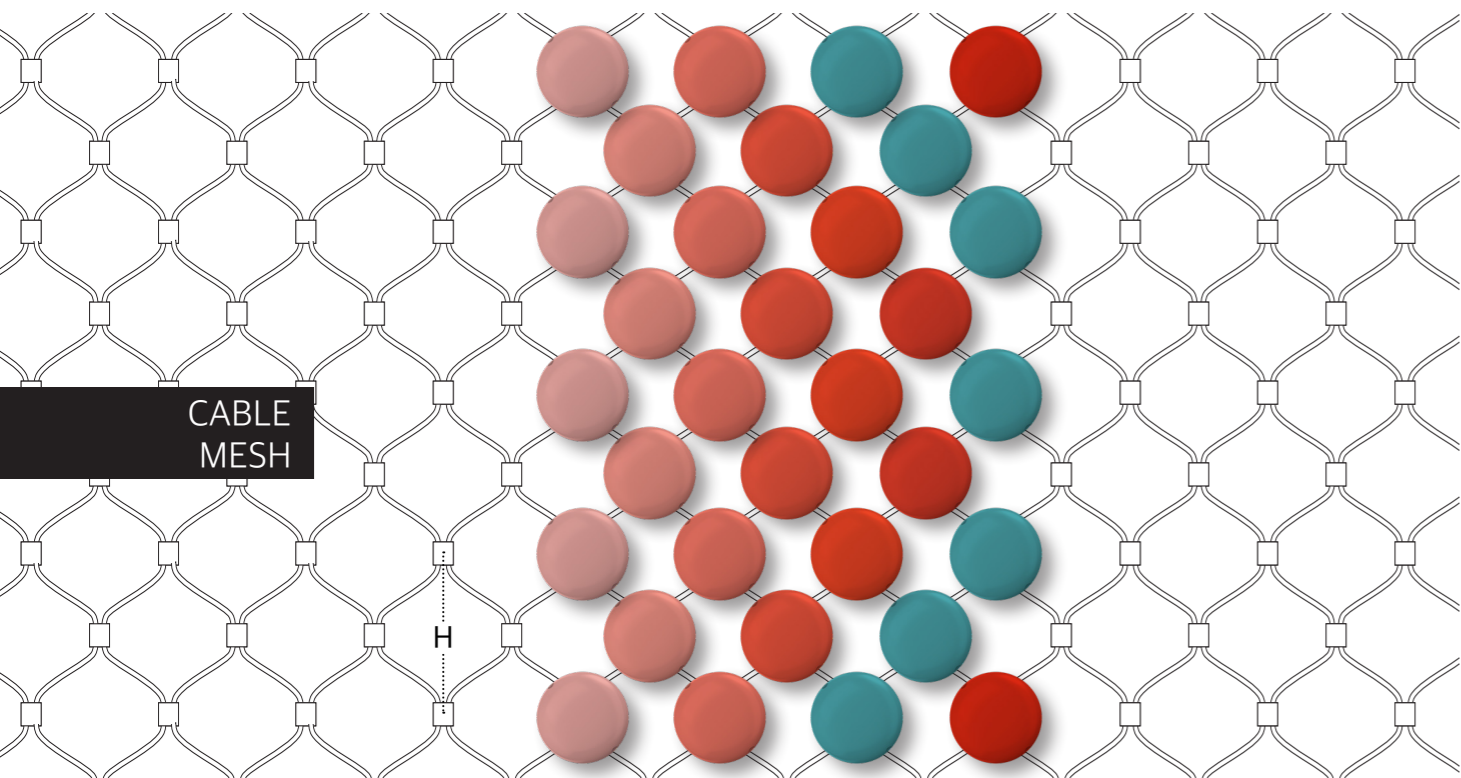
Railing

The specific mesh sizes of the fabrics prevent climbing and the fabrics fulfil the EU standards concerning fall-through protection.



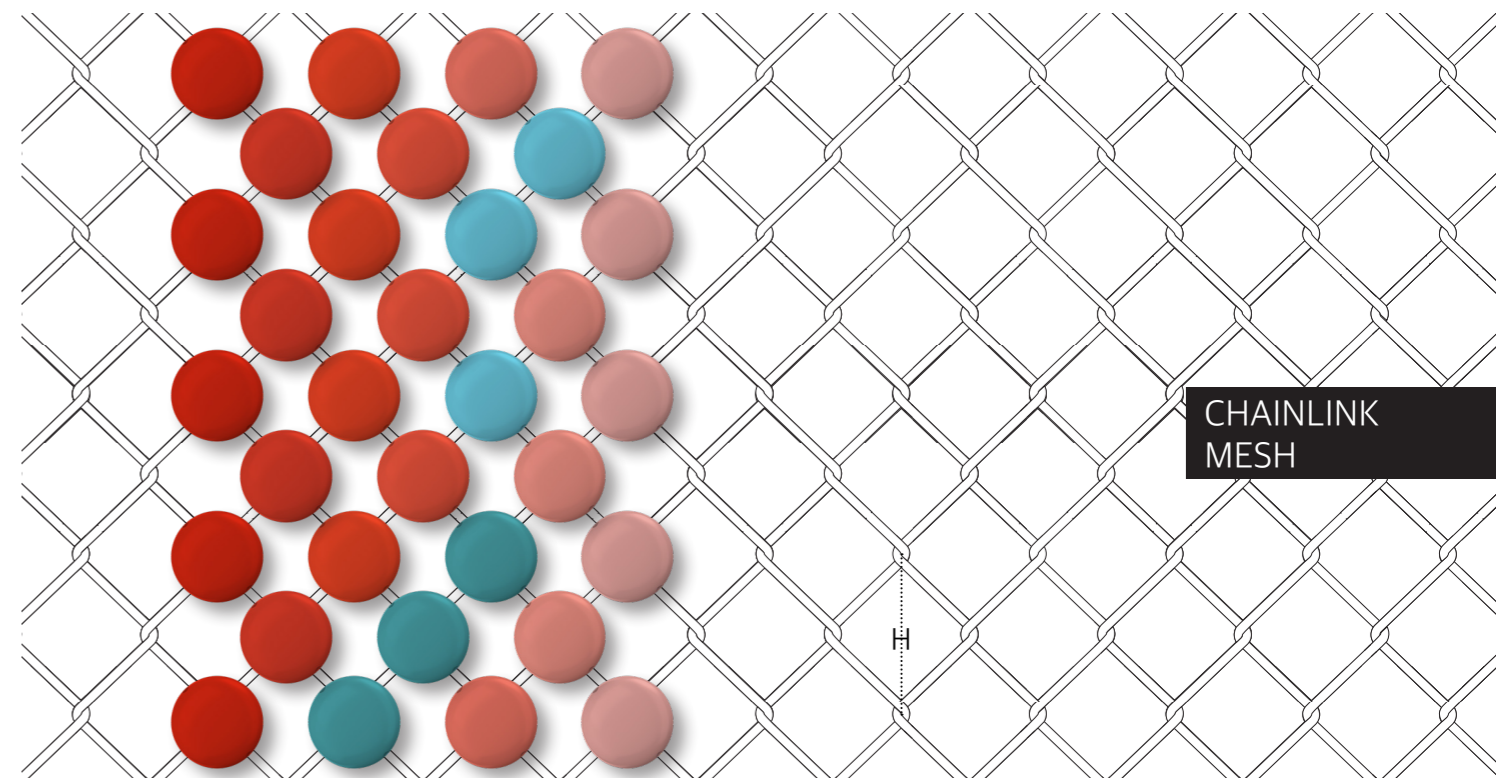
WELDED  
MESH

H



CABLE  
MESH

H



CHAINLINK  
MESH

H

#5

**Base Material**

DEDOTS come in three types of mesh base materials. Choose from the following options:

**Welded mesh**

Stainless steel 4 mm wire

Mesh size 50 mm

The welded mesh panels are made of 3.7mm welded steel rods which form a stiff, grid-like structure. Its robust form makes it most suitable for use as railings, balconies and ceiling/wall panels.

**Cable mesh**

Stainless steel 2 mm wire

Mesh size variable

The mesh cables are made of stainless steel cables and clamps. The mesh is barely visible which gives greater emphasis to the graphic image itself and is most suitable to fit large surfaces, three-dimensional structures or custom designed shapes.

**Chain-link mesh**

PVC Coated 3.7mm wire

The chain link mesh is made of PVC-coated galvanised wire cables that twist around one another into helices. This gives it a loose structure and requires a substructure to tighten the mesh. The chain link mesh is best used to fit larger surfaces.

Mesh size 40 mm and 25 mm

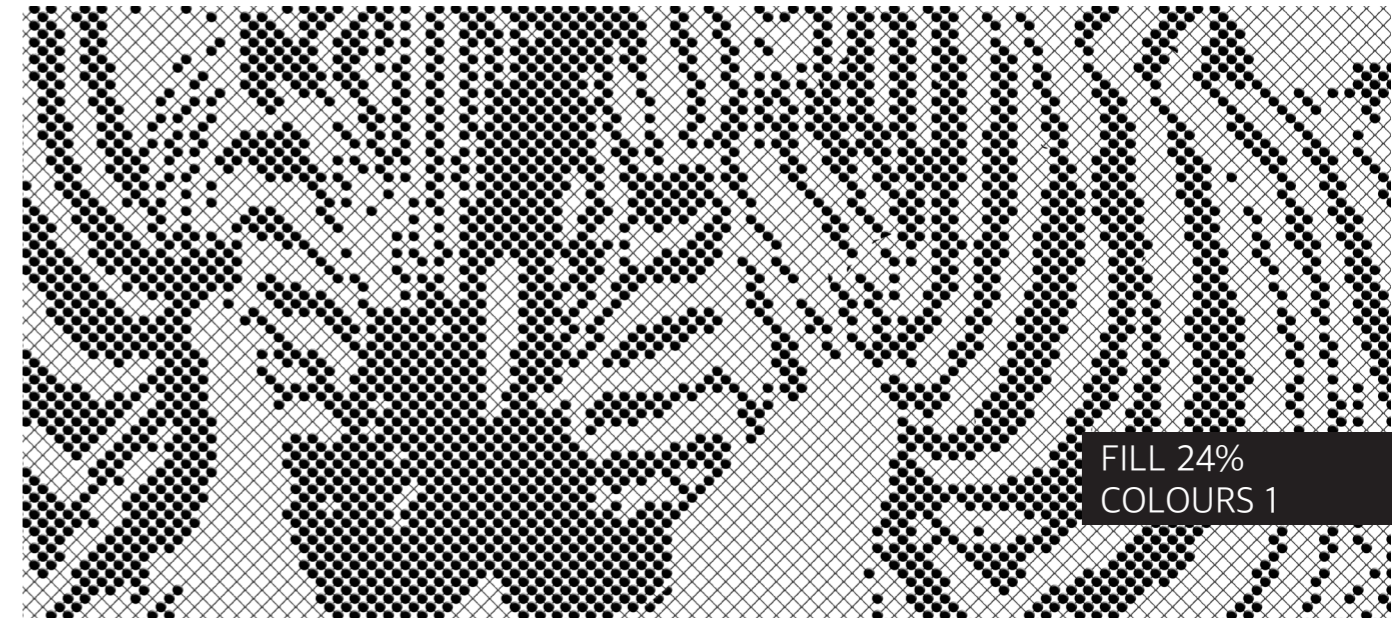
‘A supportive  
structural backbone’

# #6

## Density

Besides colour and the graphical quality of the image, transparency is one of the key features of the material DEDOTS. Transparency can be added by different patterns, a gradient in density, or by simply omitting the pixels in certain spots. Greater density per m2 is helps create shade, shelter or improve privacy, whereas fewer dots per m2 give a transparent, more minimal effect.

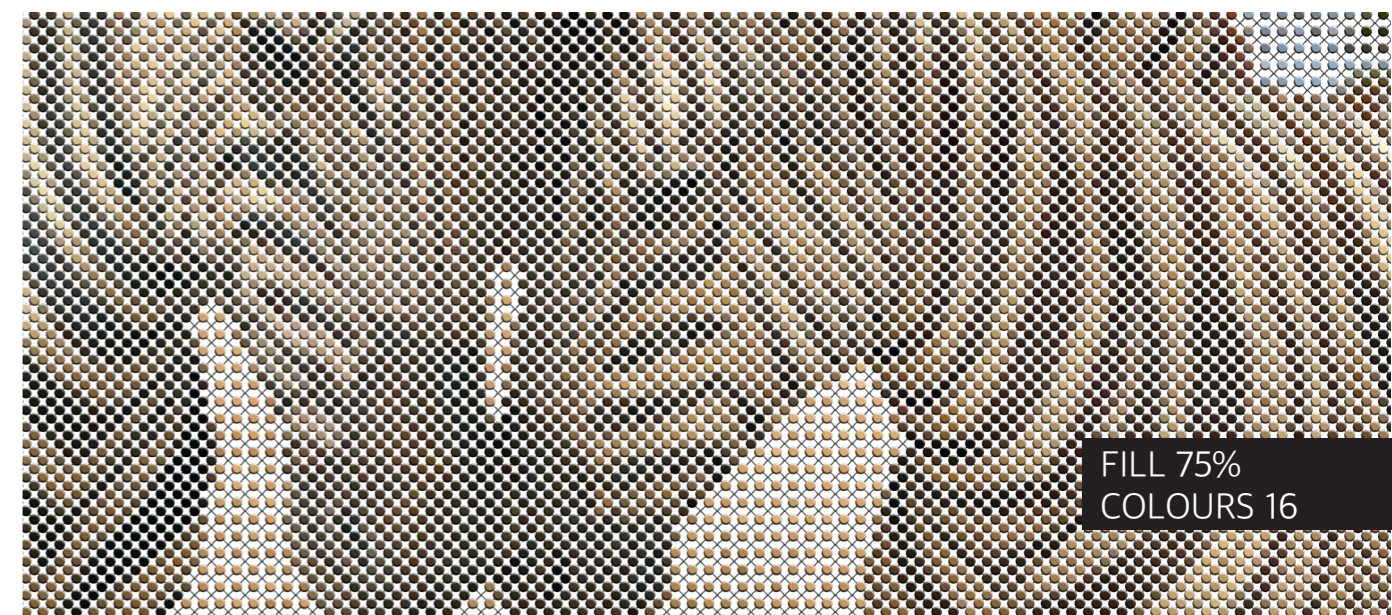
‘Experiment with depth and texture’



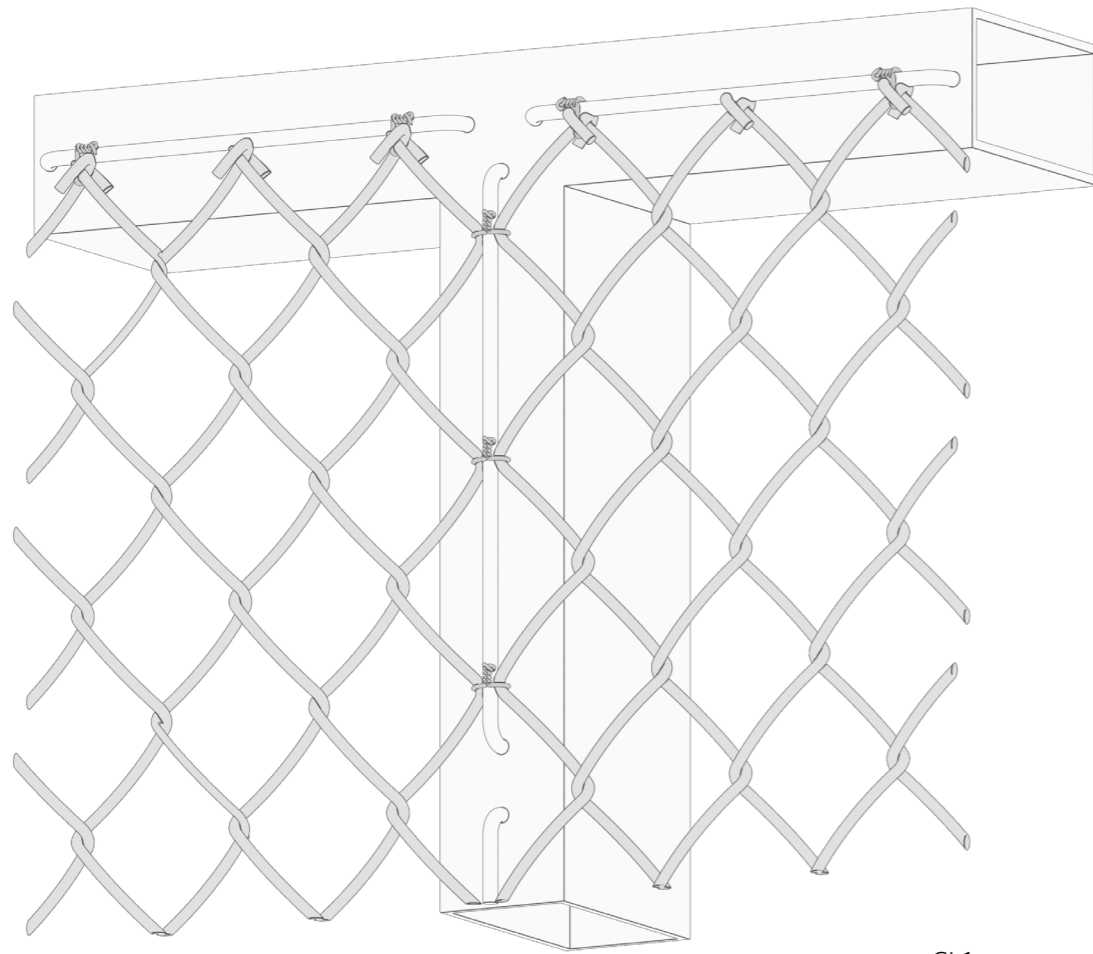
FILL 24%  
COLOURS 1



FILL 42%  
COLOURS 8



FILL 75%  
COLOURS 16



CL1

‘Simple and familiar’

#7

**Mounting**

The three base materials, on which Dedots is produced, are widely used worldwide. The mounting details are just as well-known as the base materials themselves. This makes it easy for local parties to install the product. If required, one of our representatives can assist in finding a local installer.

**Chain-link mesh**

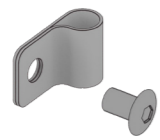
CL1 tie-wire / steel structure with brackets  
 CL2 rods and clips RC.1 / steel frame

**Cable mesh**

CB1 tension cable and o-bolt / concrete structure  
 CB2 mounting cable / steel frame

**CHAINLINK MESH**

**CABLE MESH**



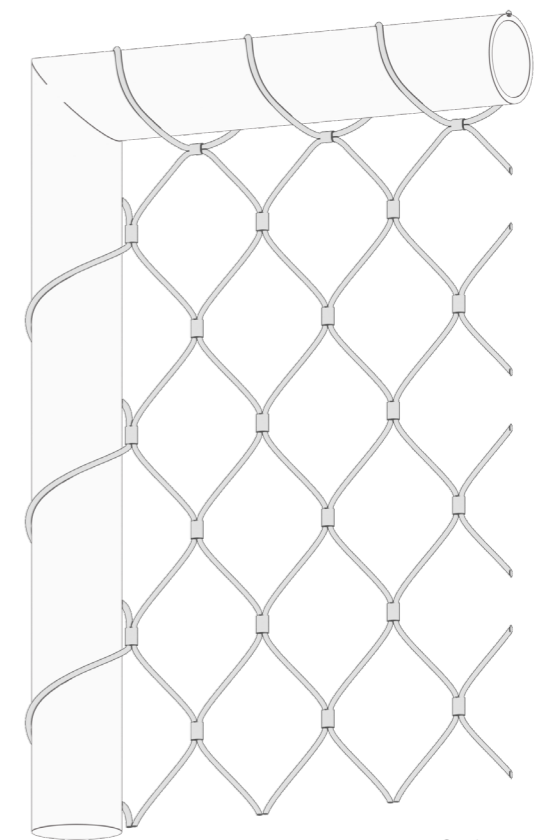
RC.1



CL2



CB1



CB2

# #8

## Ceiling panels

CP1 ceiling panels and Dedots clips RC.2 / adjusting hook

## Welded mesh

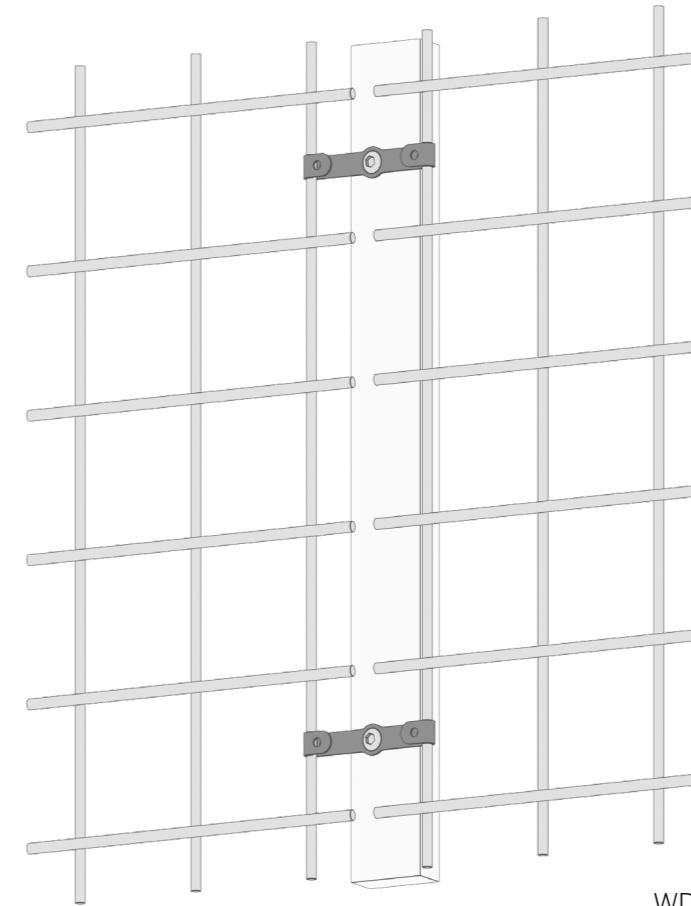
WD1 welded mesh and Dedots clips RC.2 / wooden batten  
WD2 welded mesh and Dedots clips RC.1 / steel T-profile



RC.1

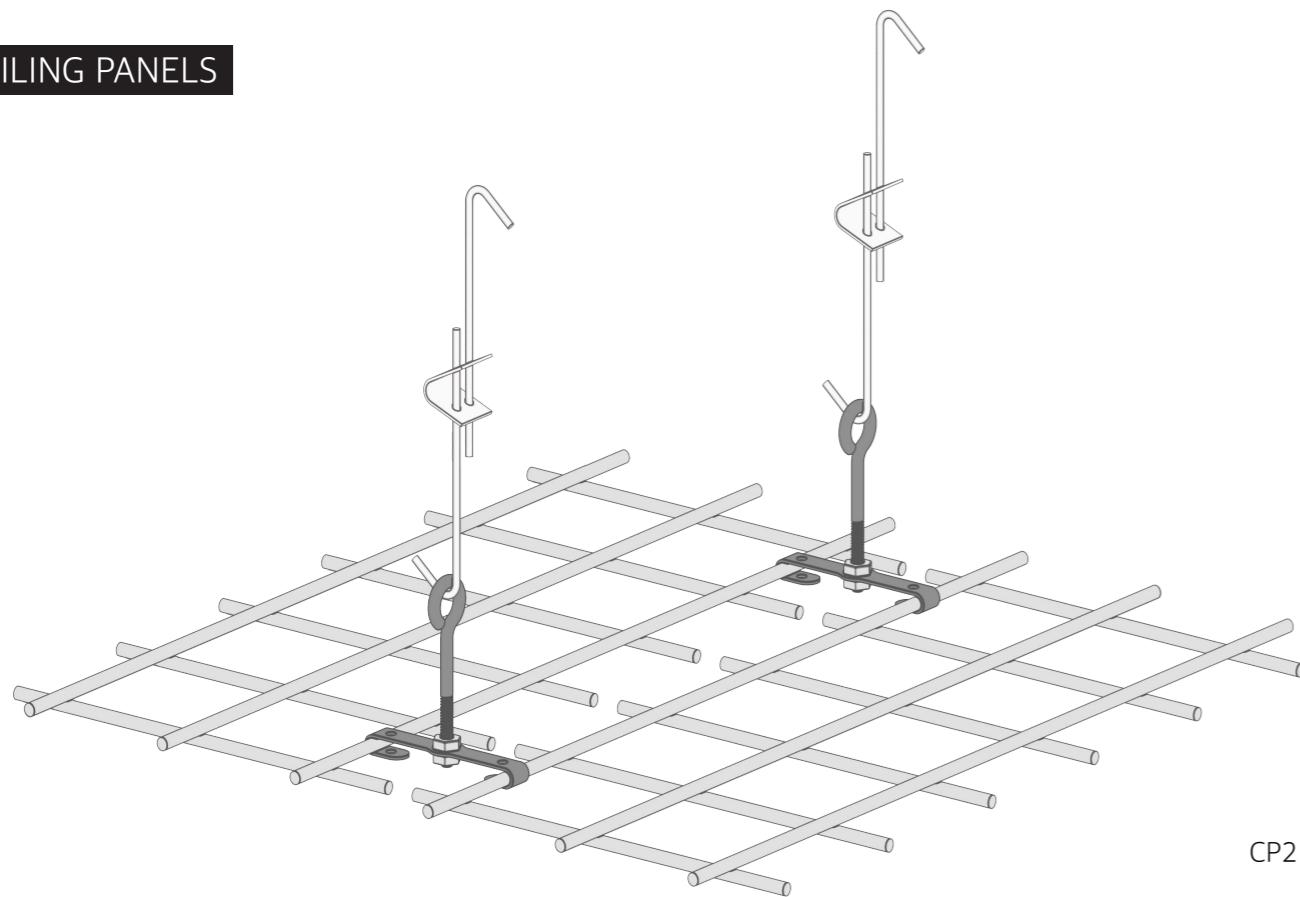


RC.2



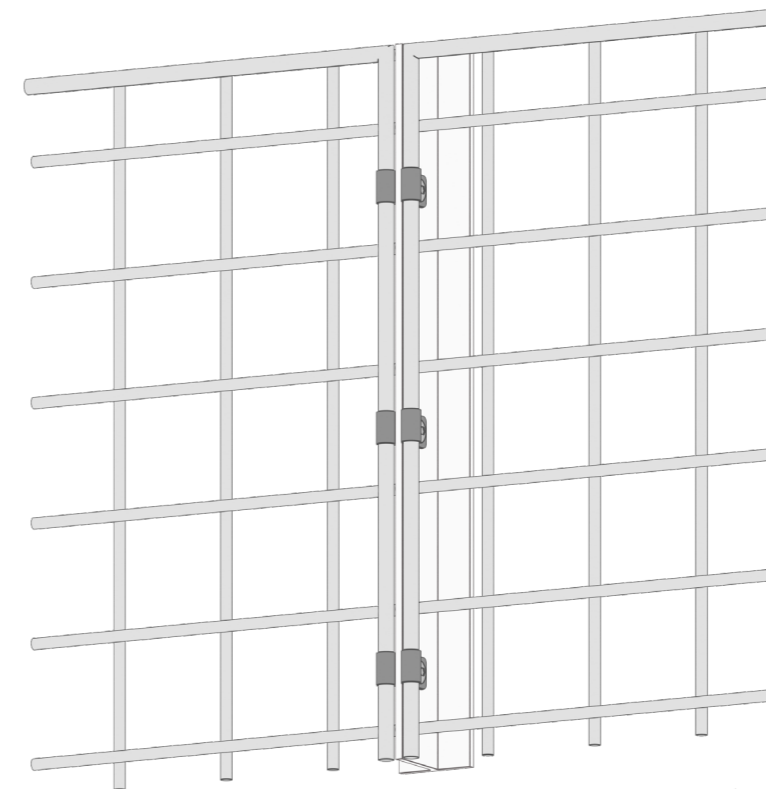
WD1

## CEILING PANELS

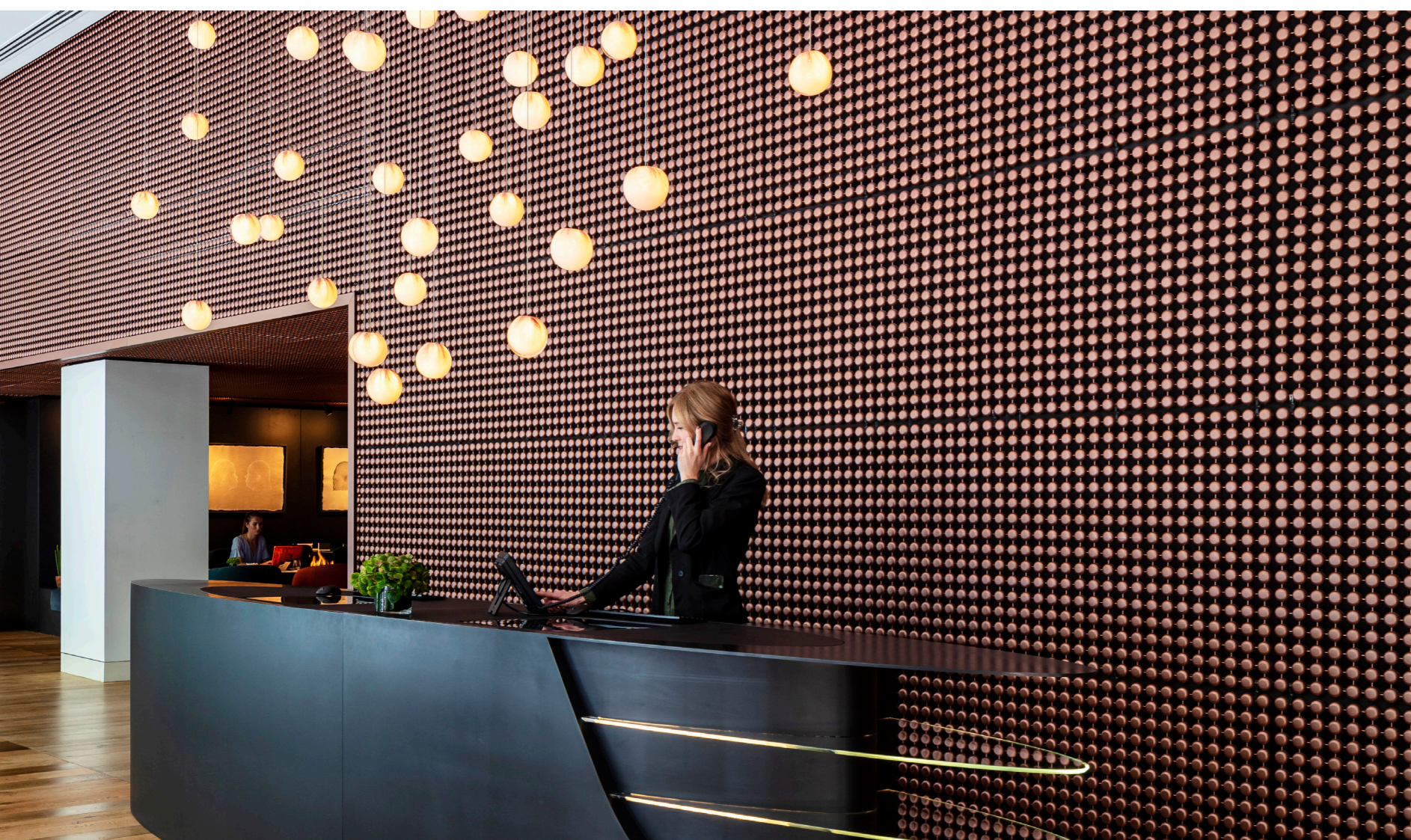


CP2

## WELDED MESH



WD2





**REDFORT**<sup>°</sup>  
architectural fabrics

Amsterdam  
[www.redfort.nl](http://www.redfort.nl)  
[info@redfort.nl](mailto:info@redfort.nl)