

**i-Mesh**

**The Runners Collection**

**Our mission is not ordinary,  
because we work everyday  
to open and soften the formal,  
materic and design stiffness,  
universally perceived as architecture.**

## What's i-Mesh?

**Patented, award-winning, sustainable and fully customizable textile, born just for architecture, design, art and poetry.**

i-Mesh is a **technical and sustainable textile for architecture**, a brand new patented technology conceived after years of internal research in the marine and aerospace context. It's an absolute novelty within the construction market: a non-woven textile made of **durable and unbeatable fibers**, that can be applied both to outdoor and indoor installations.

i-Mesh is produced only in form of bespoke panels.

It means that **we do not produce waste**, because we provide tailored shapes for each project and we reuse scraps for arts, research and development.

A flexible and patented production system allows you to **create infinite textures, styles and aesthetical effects**. Partnered with our technical office, you are free to design unique patterns to enrich your projects and meet all the special requirements of your customers. But if time runs out, you can easily choose your favourite texture from this "Runners Collection" designed by our in-house creative department.

It doesn't matter if it's **art or science** what we must deal with, as we love both equally. That's why i-Mesh is just what visionary thinkers need.

## Cos'è i-Mesh?

**Tessuto brevettato, sostenibile e totalmente personalizzabile, nato solo per l'architettura, il design, l'arte e la poesia.**

*i-Mesh è un tessuto tecnico e sostenibile per l'architettura, un'invenzione concepita dopo anni di ricerca in ambito nautico e aerospaziale.*

*Una **novità assoluta nel mercato delle costruzioni**: un tessuto non-tessuto, brevettato, costituito da **fibre resistenti e durevoli**, che può essere installato sia in spazi interni che in esterno.*

*i-Mesh è prodotto in **pannelli fatti su misura**. Le textures, le forme e i sistemi installativi sono progettati da te con il continuo supporto del nostro team di architetti e designer, che ti accompagnano nell'ingegnerizzazione delle tue idee. Un sistema produttivo flessibile, infatti, consente ad architetti, designer ed artisti di **creare infiniti pattern, stili e cifre estetiche**.*

*i-Mesh è un prodotto sostenibile, perché fatto di fibre minerali, senza produzione di sfridi. È leggero, estremamente durevole, riutilizzabile e riciclabile.*

*Non riusciamo mai a dividere l'estetica dalla tecnica, perché amiamo incodizionatamente **arte e scienza**.*

*Per questo tra designer visionari e i-Mesh è amore a prima vista.*



**Dynamic Solar Shading, made in Sunshield F 100**

Solar Decathlon Middle East 2018 w/ La Sapienza University - Dubai 2018

## Indoor elegance, outdoor performance

**Separate without dividing with an airwall, cool down as never before under a sun shade system or lay back and enjoy the wonderful i-Mesh's lights and shadows game.**

In the modern co-working spaces and contemporary offices, i-Mesh helps to **separate** the workstations **without dividing the ambients**. Placed horizontally, it's a ceiling that, spreading the light in a charming way, covers the visual impact of technical equipment above head.

When utilised outdoor, the excellent technical characteristics of the fibers **create maximum thermal comfort** under the shaded area.

The lightness, the design uniqueness and its ease of installation, together with its reusability, make of i-Mesh an **excellent material for exhibition and scenography**.

Sun protection, facades, room partitions, ceilings, curtains, light design, haute couture fashion, tapestries, art pieces: a **material with few limits** and infinite applications yet to be discovered.

## Elegante per gli interni, performance per l'outdoor

**Fare ordine con un airwall, godersi l'ombra guardando il cielo o semplicemente perdersi nel meraviglioso gioco di luci e ombre creato da i-Mesh.**

Con i-Mesh puoi **separare persone senza dividere l'ambiente**, nel lavoro e nel pubblico. Utilizzato come controsoffitto, **copre gli impianti tecnici** e, allo stesso tempo, **diffonde elegantemente luci ed ombre** all'interno del tuo negozio. Quando riparati da una copertura i-Mesh, le eccellenti caratteristiche tecniche delle fibre consentono di ottenere il **massimo comfort termico**.

La leggerezza, la customizzazione del design, la sua semplicità installativa e la sua durezza, fanno di i-Mesh il **materiale perfetto per l'allestimento di stand fieristici** o per scenografie di grande impatto visivo.

Sistemi di protezione solare, facciate di edifici, partizioni leggere, tendaggi, controsoffitti, light design, alta moda, arazzi, opere d'arte: un materiale con pochi limiti, dalle **infinite applicazioni ancora da scoprire**.



**Big screens for scenography, made in Morellet F 300**

Puzzle Me! at Teatro della Triennale, Milano 2015

# Six natural solutions

**The six basic colours are the natural colours of the fibers.  
We make no use of dyes, in order to save additional costs,  
time and environment.**

# *Sei soluzioni naturali*

***I sei colori base sono i colori naturali delle fibre.  
Non facciamo uso di tinture, al fine di risparmiare costi aggiuntivi,  
tempo e salvaguardare l'ambiente.***

FIBERGLASS







CARBON

VOLCANO

TECHNORA

BASALT

ZYLON

		TENSILE STRENGTH TO WEIGHT	HEAT REFLECTANCE	COLOUR	LIGHT TRANSMITTANCE	STRENGTH AFFECTED BY UV	COLOUR CHANGE BY UV	COST
	<b>FIBERGLASS</b> MINERAL	moderate	low	white	medium	no	no	medium
	<b>CARBON</b> MINERAL	very high	no	black	no	no	no	high
	<b>VOLCANO</b> MINERAL	moderate	medium	champagne	moderate	no	no	medium
	<b>TECHNORA</b> MAN MADE	high	medium	gold	low	yes	yes	medium
	<b>BASALT</b> MINERAL	moderate	low	brown	no	no	no	medium
	<b>ZYLON</b> MAN MADE	very high	low	copper	no	yes	no	very high



# The Runners Collection

**i-Mesh is produced only in bespoke panels,  
custom made for your needs.**

**Tell us your favourite design in three simple steps.**

***i-Mesh è prodotto solo in pannelli realizzati su misura,  
personalizzabili e pronti per essere installati.  
Crea il tuo campione di prova in tre semplici passaggi.***

1



**choose  
the design**  
*scegli il design*

Browse designs through our collection and take the one that suits your needs best. Look carefully at the description, some designs are better than others for specific uses.

*Sfoggia la nostra collezione e scegli il design più adatto alle tue esigenze. Leggi attentamente la descrizione, alcuni disegni sono migliori di altri per usi specifici.*

2

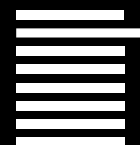


**choose the  
pattern scale**  
*scegli la scala*

We are available to suggest you the best possible i-Mesh combination. Transparency or coverage? We can scale the design as you prefer, denser to create more privacy or emptier to screen less.

*Siamo disponibili a suggerirti la migliore combinazione possibile di i-Mesh. Trasparenza o copertura? Siamo in grado di ridimensionare il design come preferisci, per creare più o meno privacy.*

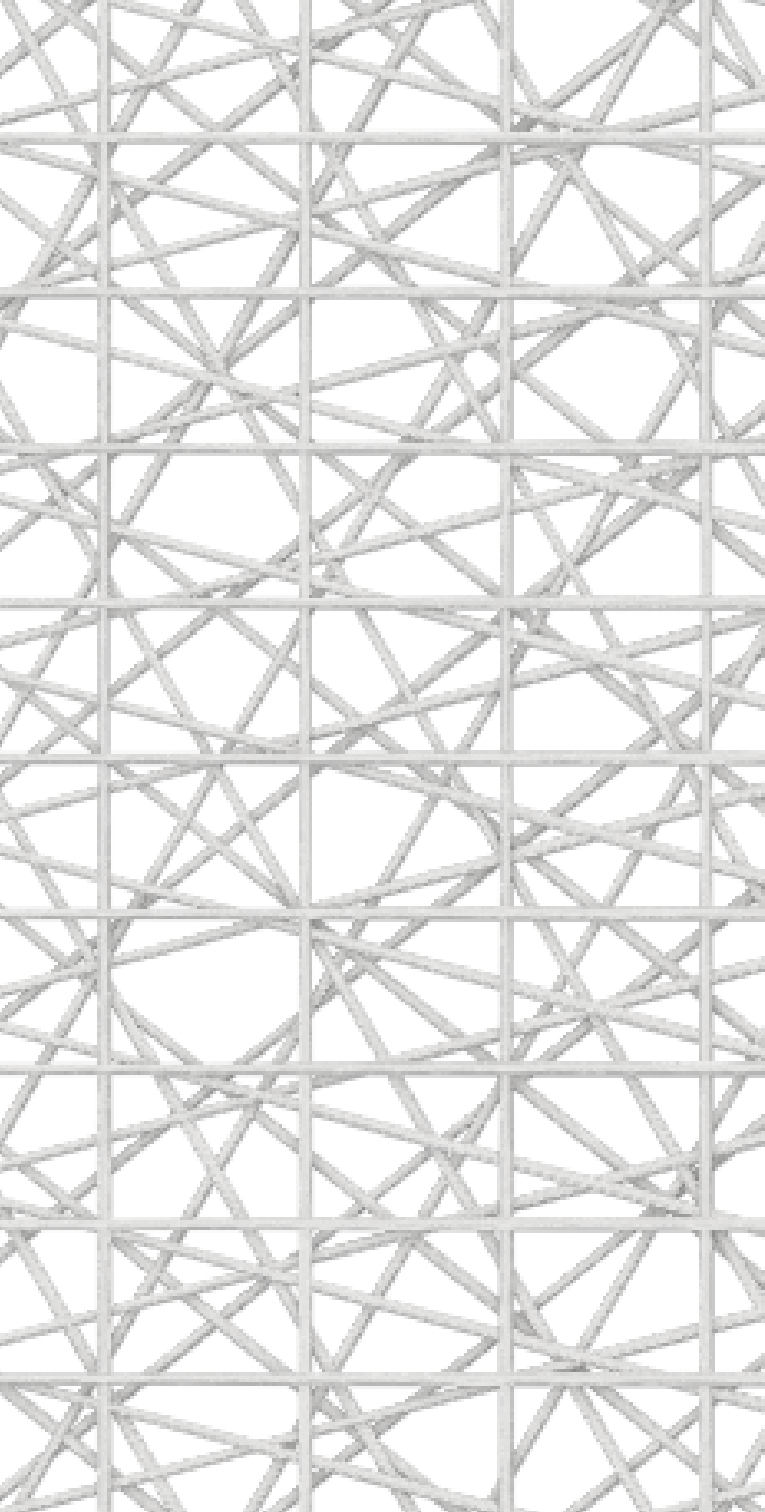
3



**choose  
the fibers**  
*scegli le fibre*

We propose six basic colours, the natural ones of the fibers. White, black, gold, copper, brown and champagne: select a wonderful monochrome pattern or an amazing blend.

*Proponiamo sei colori base, i colori naturali delle fibre. Bianco, nero, oro, rame, fango e champagne: scegli un motivo monocromatico o uno splendido abbinamento.*



1

## Design

# MORELLET

**A classic one, clearly inspired by the french artist Morellet. It's ideal for panels tensed in orthogonal directions or for flat curtains.**

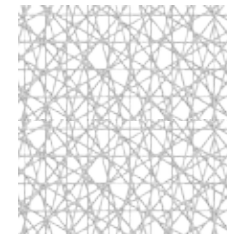
*Classico pattern di i-Mesh, è ideale per pannello tensionato nelle due direzioni primarie o come tenda a caduta. Chiaramente ispirato all'artista Morellet.*

2

## Pattern Scale

Morellet can be scaled as you prefer.

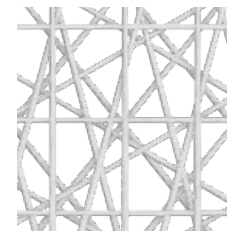
from 50%  
(more privacy)



code: **50**




up to 500%  
(more visibility)




code: **500**

3

## Fibres

 Fiberglass **(F)**

 Carbon **(C)**

 Basalt **(B)**

 Technora **(T)**

 Zylon **(Z)**

 Volcano **(V)**

=

## Your Choice

**MORELLET F 100**  
*\*100 = i-Mesh standard aperture*

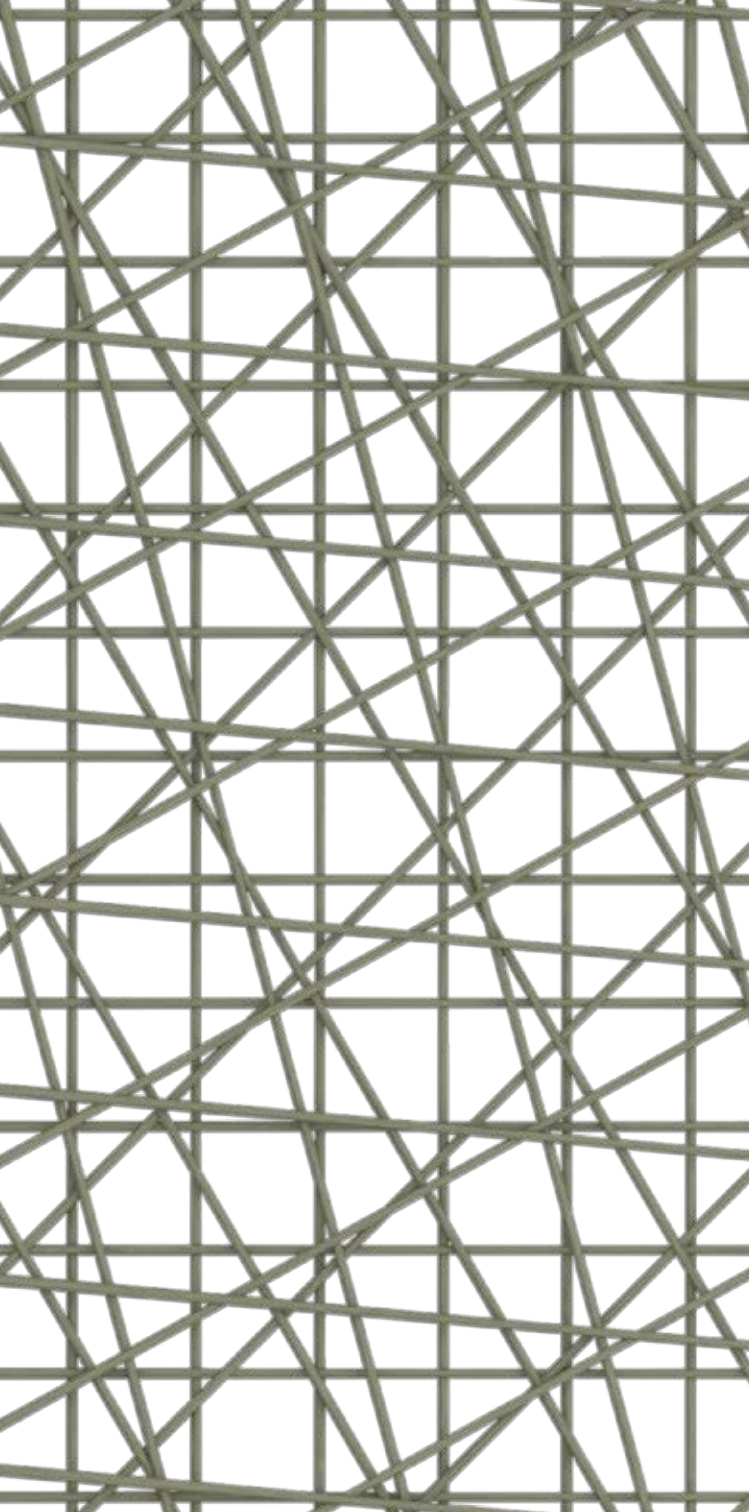
**MORELLET C 100**

**MORELLET B 100**

**MORELLET T 100**

**MORELLET Z 100**

**MORELLET V 100**



1

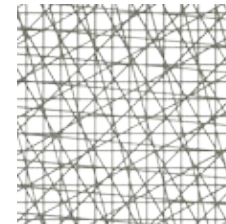
Design

2

Pattern Scale

Random can be scaled as you prefer.

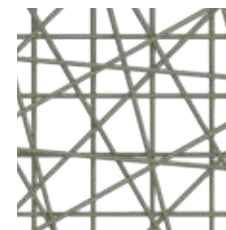
from 50%  
(more privacy)



code: 50



up to 500%  
(more visibility)



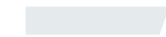
code: 500

3

Fibres



Basalt (B)



Fiberglass (F)



Carbon (C)



Technora (T)



Zylon (Z)



Volcano (V)

=

Your Choice

**RANDOM B 100**

*\*100 = i-Mesh standard aperture*

**RANDOM F 100**

**RANDOM C 100**

**RANDOM T 100**

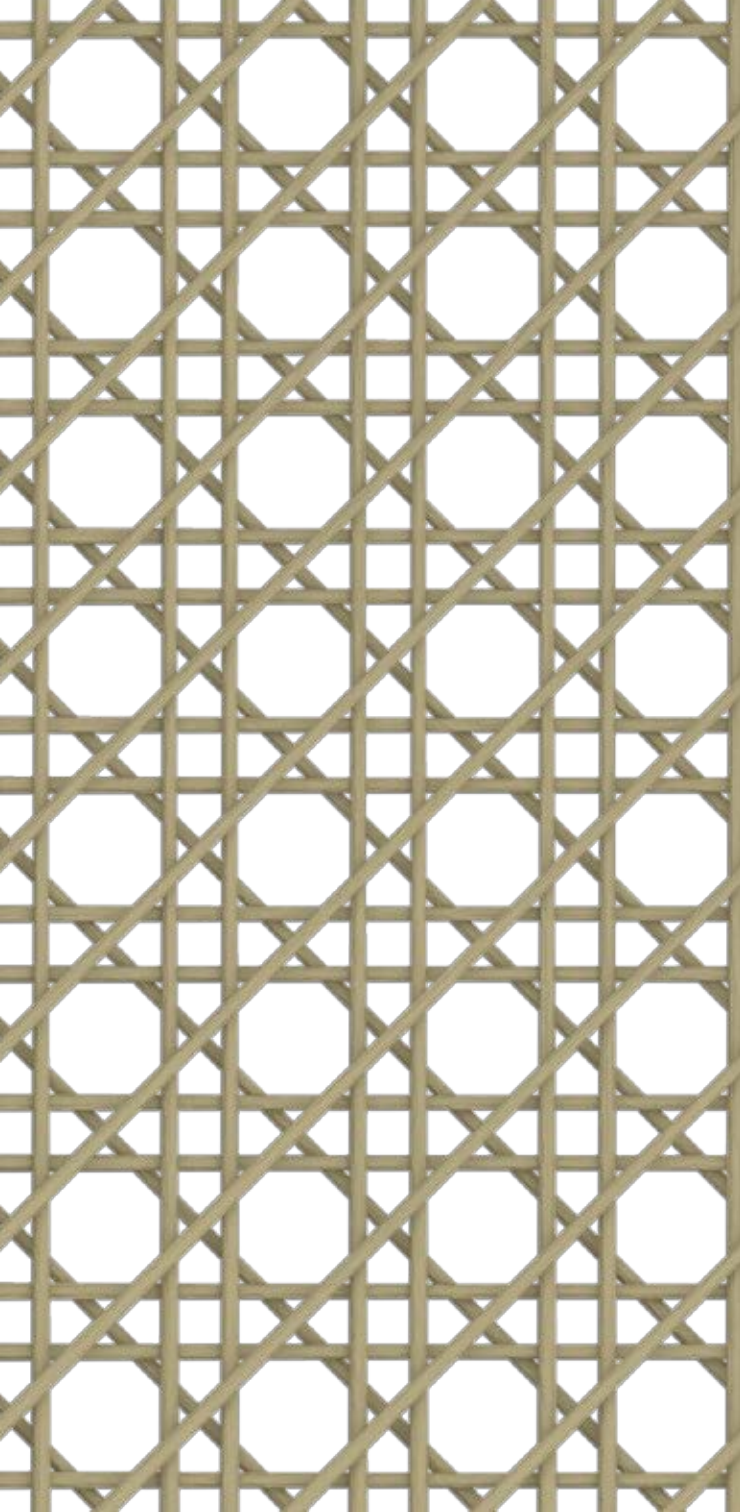
**RANDOM Z 100**

**RANDOM V 100**

# RANDOM

**Behind an attractive random chaos,  
lies a checkered pattern  
which allows the panel  
to be tensed in both directions.**

*Nel caos composto della randomizzazione,  
si cela una tessitura ortogonale  
che ne consente l'applicazione con  
tensionamento in entrambe le direzioni.*



1

## Design

# WIEN STRAW

**A great classic in the world of textures.  
At our local mountain communities,  
this pattern was made of wicker for the  
international furniture companies.**

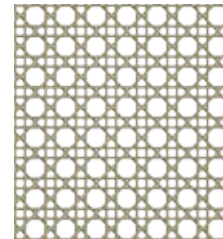
*Reinterpretazione di un grande classico  
delle trame, che veniva realizzato in midollino  
dagli artigiani dei nostri paesi di montagna,  
i quali lavoravano, da quei luoghi incantati,  
per aziende del mobile internazionale.*

2

## Pattern Scale

Wien Straw can be scaled  
as you prefer.

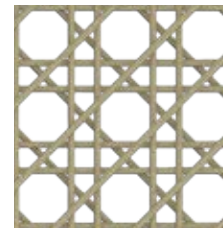
from 90%  
(more privacy)



code: **90**



up to 500%  
(more visibility)




code: **500**

3

## Fibres

 Volcano (**V**)

 Fiberglass (**F**)

 Basalt (**B**)

 Technora (**T**)

 Zylon (**Z**)

 Carbon (**C**)

=

## Your Choice

**WIEN STRAW V 100**  
*\*100 = i-Mesh standard aperture*

**WIEN STRAW F 100**

**WIEN STRAW B 100**

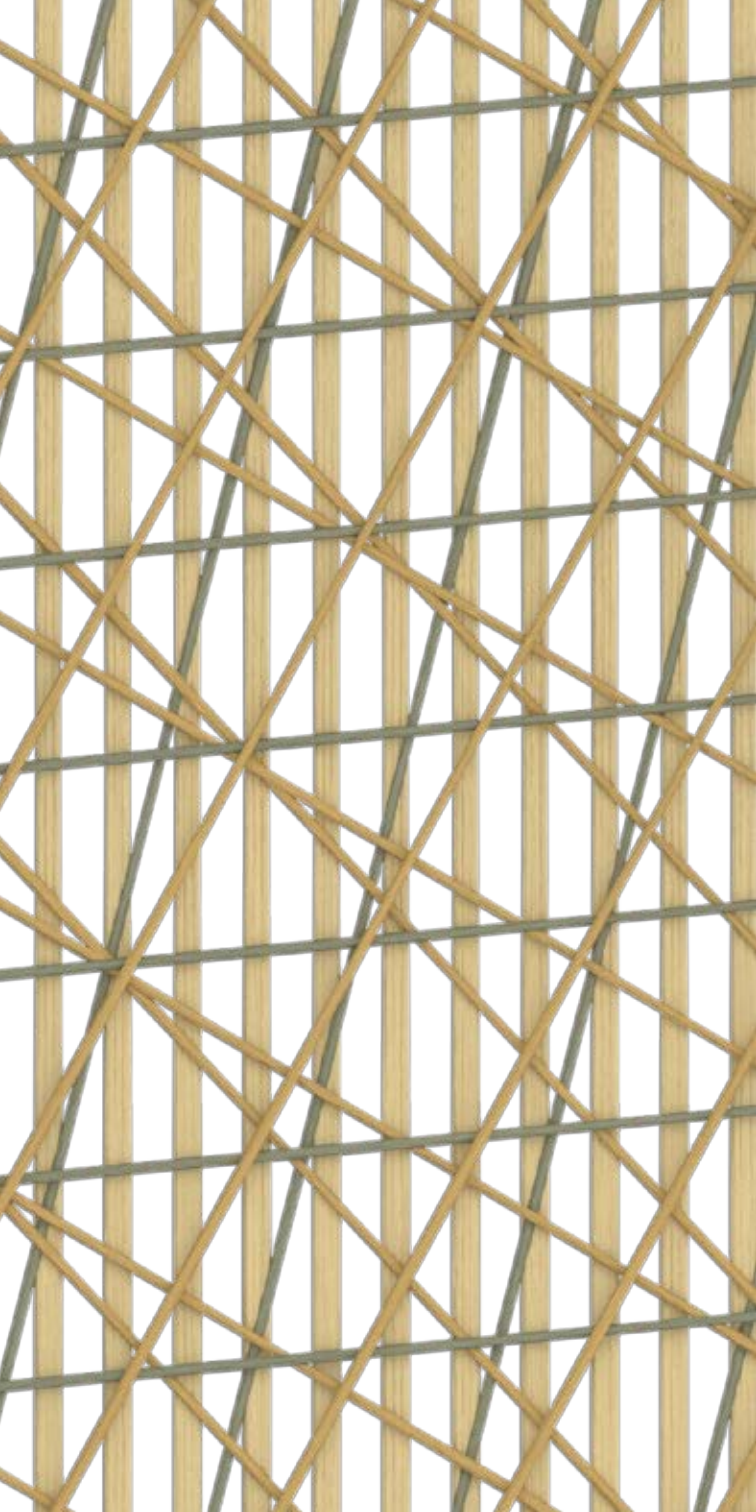
**WIEN STRAW T 100**

**WIEN STRAW Z 100**

**WIEN STRAW C 100**



Scenario, custom pattern designed by Dior  
Dior Champs Elysées - Paris 2019 ©Dior



# THREE GOLDS

## ① Design

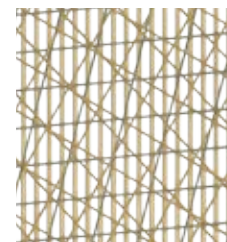
**It can be flat and rigid if tensed along the vertical direction. Otherwise, the panel can be rolled up if tensed horizontally.**

*Three Golds è tensionabile nella direzione verticale, mentre è avvolgibile nella direzione orizzontale.*

## ② Pattern Scale

Three Golds can be scaled as you prefer.

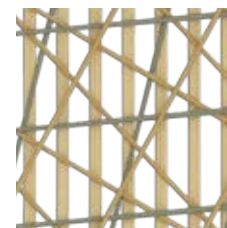
from 90%  
(more privacy)



code: **90**




up to 500%  
(more visibility)







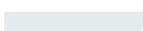

code: **500**

## ③ Fibres

-  Technora **(T)**
-  Basalt **(B)**
-  Zylon **(Z)**

-  Technora **(T)**
-  Carbon **(C)**
-  Zylon **(Z)**

-  Zylon **(Z)**
-  Basalt **(B)**
-  Volcano **(V)**

-  Fiberglass **(F)**
-  Fiberglass **(F)**
-  Fiberglass **(F)**

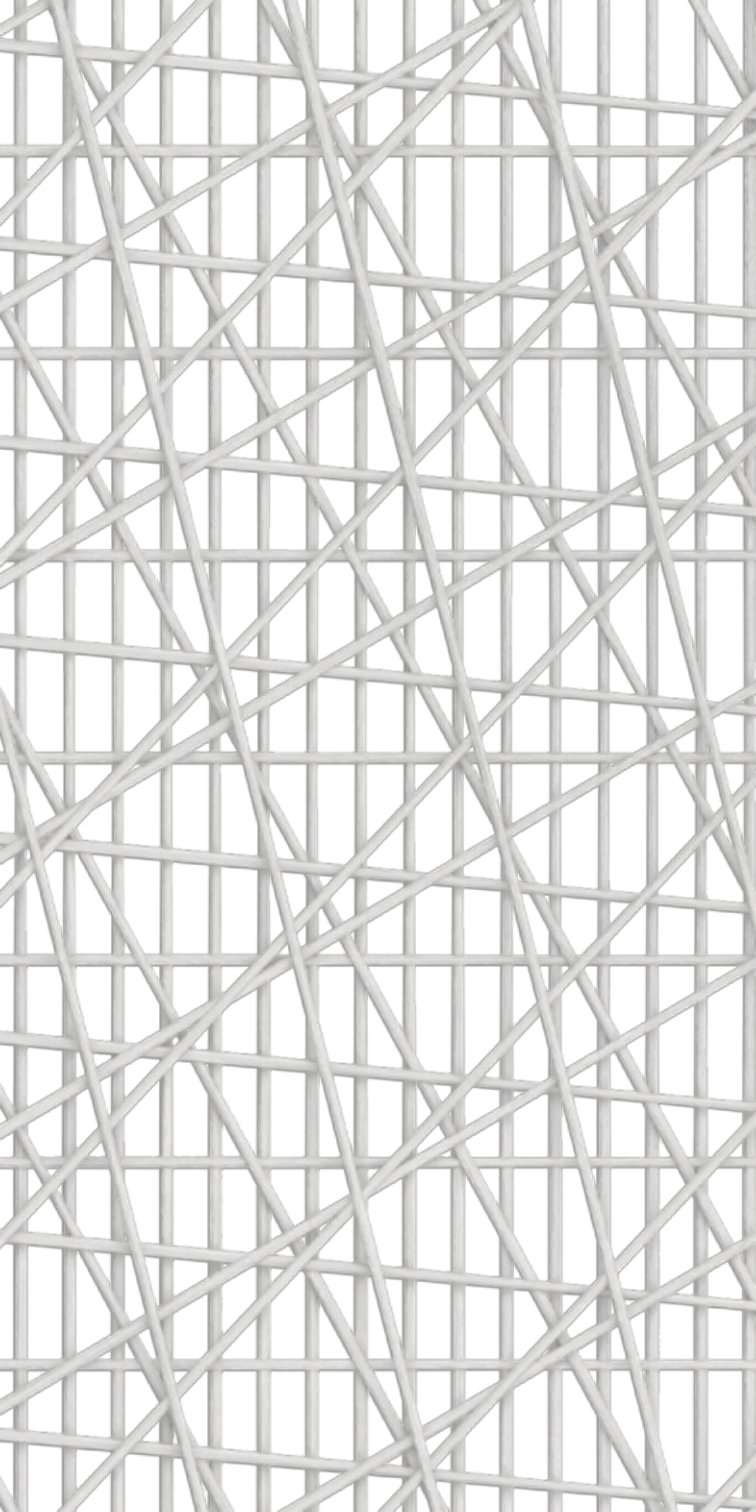
## ④ Your Choice

**3GOLDS TBZ 100**  
*\*100 = i-Mesh standard aperture*

**3GOLDS TCZ 100**

**3GOLDS BTZ 100**

**3GOLDS FFF 100**



1

## Design

# SUNSHIELD

**It keeps the performance features of a Three Golds pattern, being even more see-through. It's ideal as base for adding other patterns upon.**

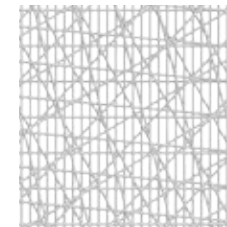
*Mantiene le caratteristiche meccaniche del Three Golds, ma con una permeabilità maggiore. Ideale da usare come base per aggiungere altri pattern sopra.*

2

## Pattern Scale

Sunshield can be scaled as you prefer.

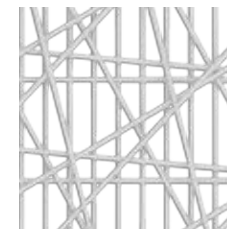
from 90%  
(more privacy)



code: **90**



up to 500%  
(more visibility)



code: **500**

3

## Fibres

 Fiberglass (**F**)

 Carbon (**C**)

 Basalt (**B**)

 Technora (**T**)

 Zylon (**Z**)

 Volcano (**V**)

=

## Your Choice

**SUNSHIELD F 100**  
*\*100 = i-Mesh standard aperture*

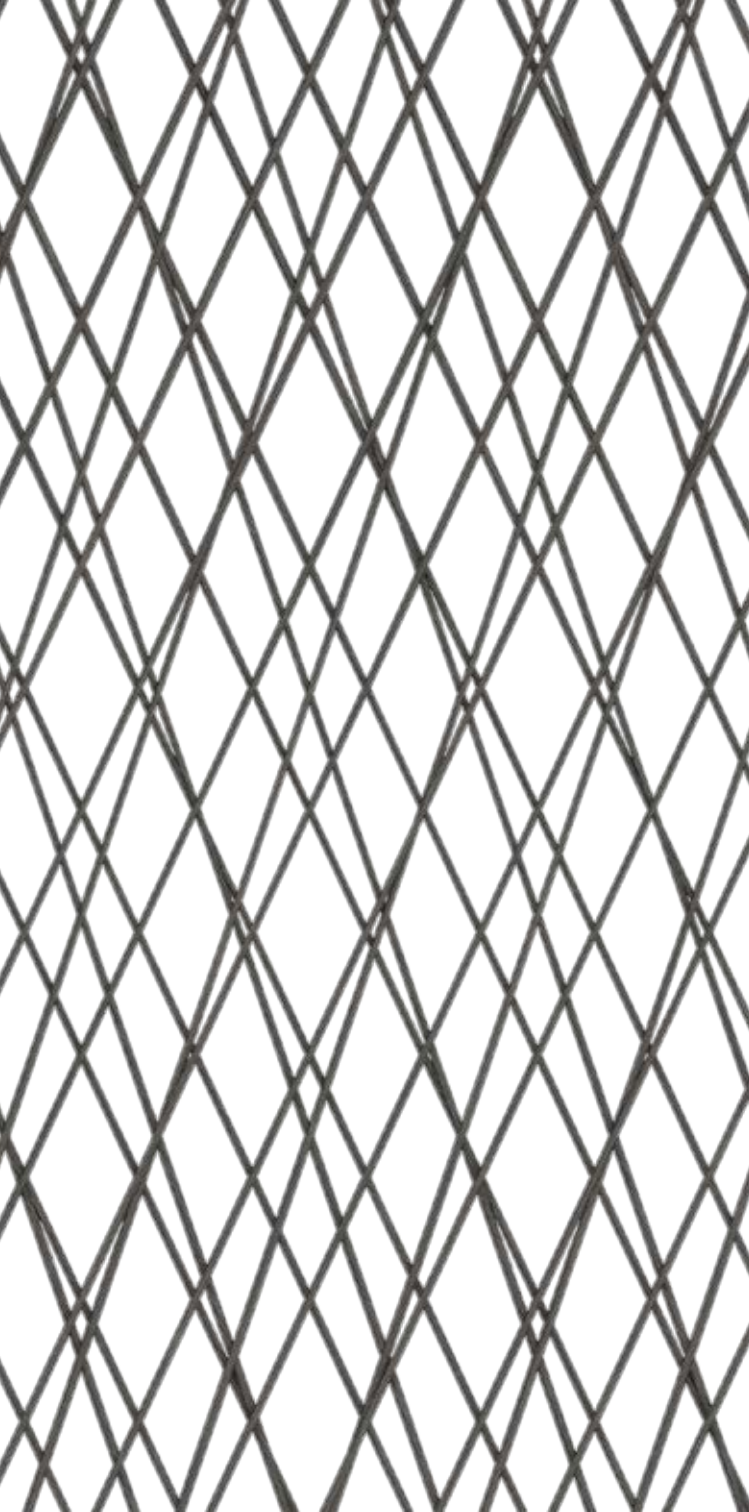
**SUNSHIELD C 100**

**SUNSHIELD B 100**

**SUNSHIELD T 100**

**SUNSHIELD Z 100**

**SUNSHIELD V 100**



①  
**Design**

**WK**

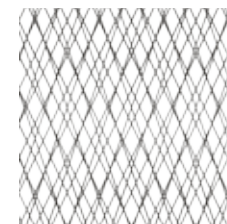
**First pattern developed  
for wavy curtains,  
designed by Ippolito Fleitz Group  
for Walter Knoll.**

*Primo pattern sviluppato  
per tendaggi ad onda,  
disegnato con Ippolito Fleitz Group  
per Walter Knoll.*

②  
**Pattern Scale**

WK can be scaled as you prefer.

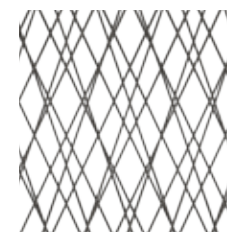
from 50%  
(more privacy)



code: **50**



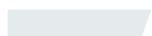
up to 200%  
(more visibility)




code: **200**

③  
**Fibres**

 Carbon **(C)**

 Fiberglass **(F)**

 Basalt **(B)**

 Technora **(T)**

 Zylon **(Z)**

 Volcano **(V)**

=  
**Your Choice**

**WK C 100**  
*\*100 = i-Mesh standard aperture*

**WK F 100**

**WK B 100**

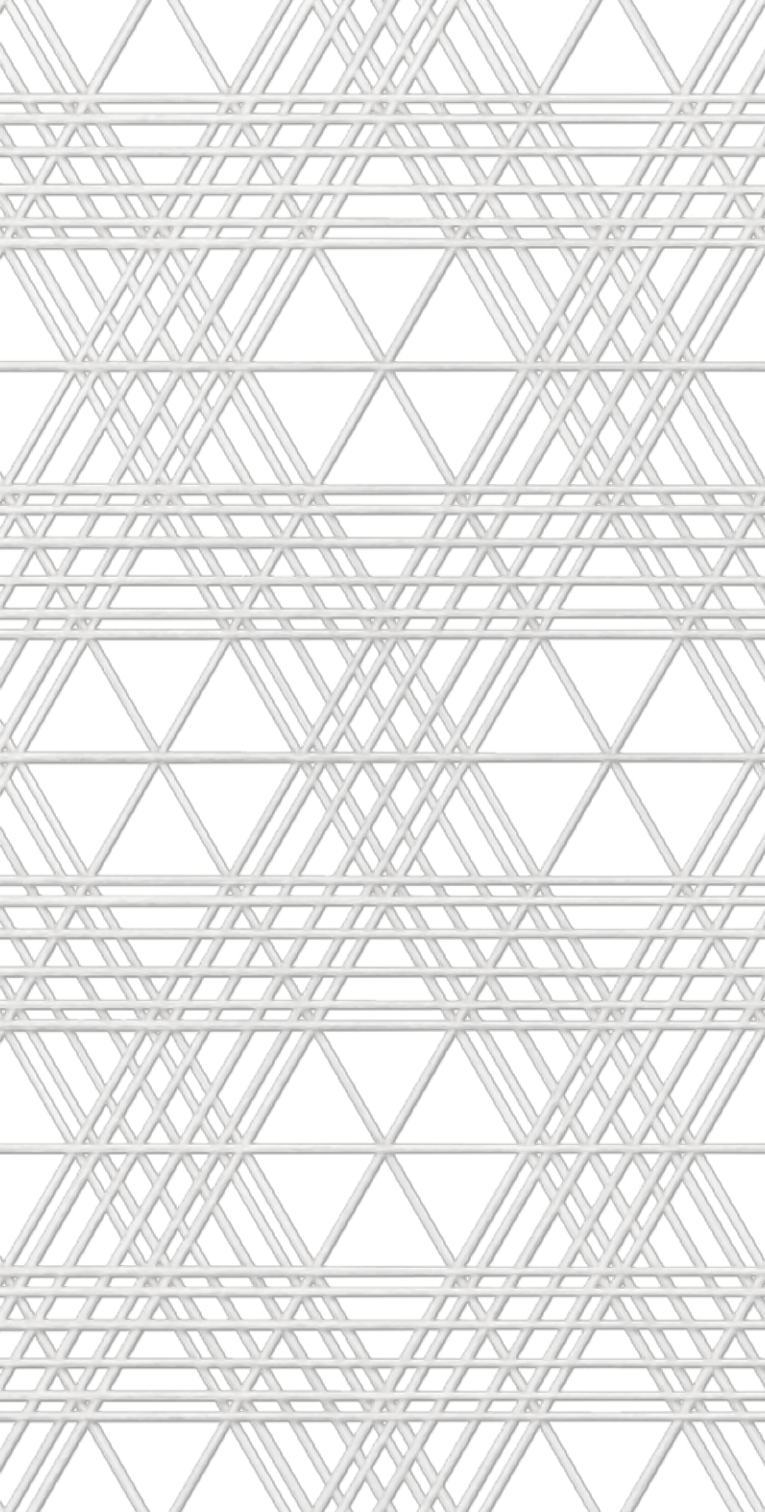
**WK T 100**

**WK Z 100**

**WK V 100**

WALTER KNOLL

**Wavey curtains - Soft divider, made in WK**  
Walter Knoll, Salone del Mobile 2015



1

## Pattern Design

# NINNAJI

**A design of rhomboids and hexagons, inspired by some details of the Ninna-Ji Kyoto Temple in Japan. It can be tensed following the diagonal directions of the fibres.**

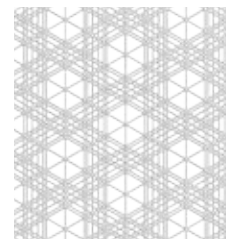
*Un design dalla geometria lineare, un gentile incastro di rombi ed esagoni che trae ispirazione dal tempio Ninna-Ji di Kyoto. Può essere tensionato seguendo la direzione diagonale delle fibre.*

2

## Pattern Scale

Morellet density can be scaled as you prefer.

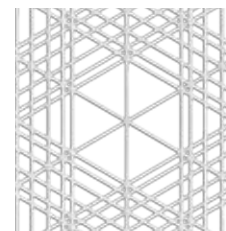
from 90%  
(more privacy)



code: **90**



up to 200%  
(more visibility)



code: **200**

3

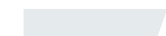
## Fibres



Carbon **(C)**

**NINNAJI C 100**

*\*100 = i-Mesh standard aperture*



Fiberglass **(F)**

**NINNAJI F 100**



Basalt **(B)**

**NINNAJI B 100**



Technora **(T)**

**NINNAJI T 100**



Zylon **(Z)**

**NINNAJI Z 100**

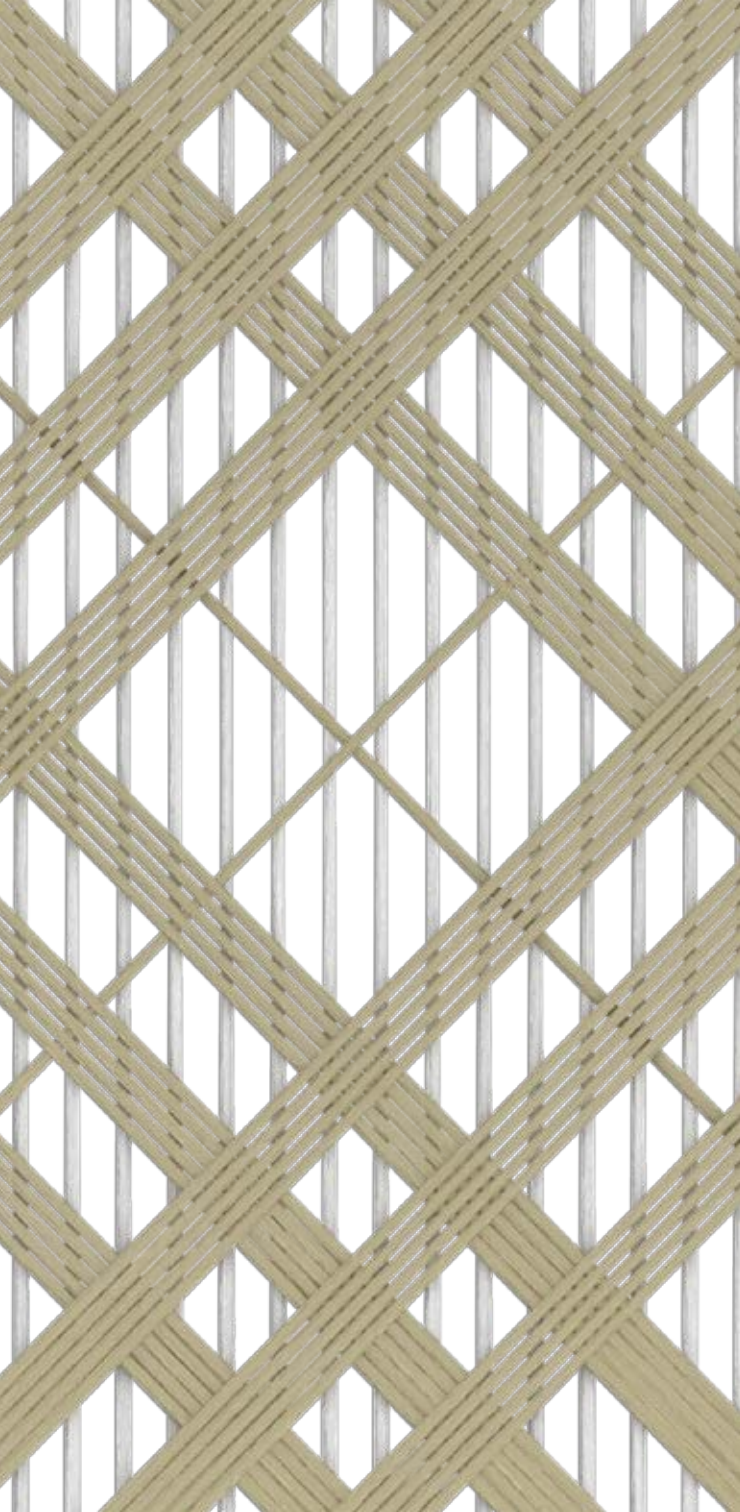


Volcano **(V)**

**NINNAJI V 100**

=

## Your Choice



1

## Design

# TARTAN

**Inspired by the scottish culture, the i-Mesh Tartan it's a classic and elegant pattern, which invites designers to play with fiber colors and geometries.**

*Inspirato alla tradizione scozzese, il Tartan di i-Mesh è un pattern classico ed elegante, che invita i designer a giocare con i colori e le semplici geometrie delle fibre.*

2

## Pattern Scale

Tartan can be scaled as you prefer.

from 90%  
(more privacy)



code: **90**




up to 500%  
(more visibility)



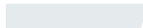
code: **500**

3

## Fibres

 Fiberglass (F)

 Volcano (V)

 Fiberglass (F)

 Technora (T)

 Fiberglass (F)

 Volcano (V)

 Zylon (Z)

 Fiberglass (F)

 Volcano (V)

 Carbon (C)

=

## Your Choice

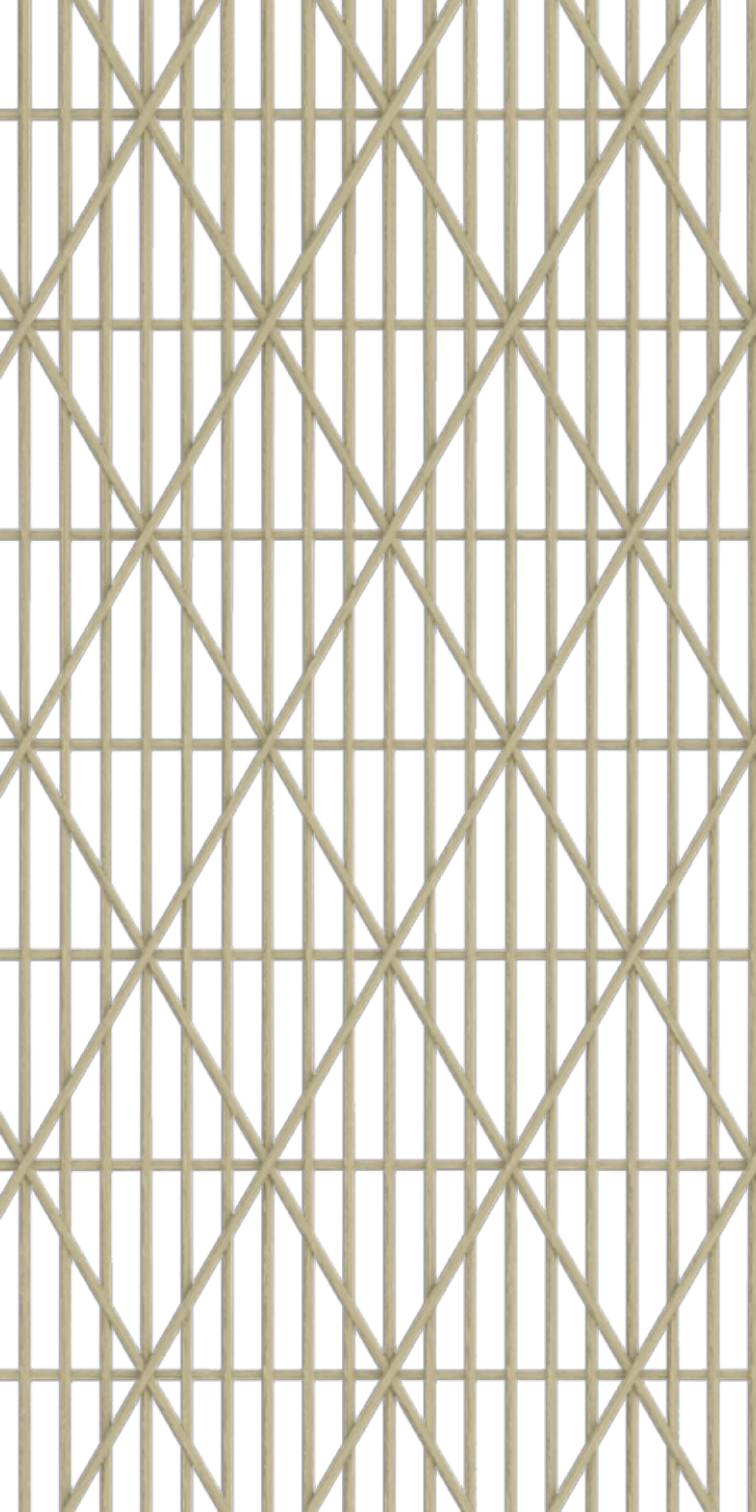
**TARTAN FV 100**

*\*100 = i-Mesh standard aperture*

**TARTAN FT 100**

**TARTAN FVZ 100**

**TARTAN FVC 100**



1

## Design

# VIVIENNE

**Considering its perfect geometry,  
it's ideal for tensed facades system.  
The texture name comes from a  
request by Vivienne Westwood.**

*Vista la geometria, è ideale per  
sistemi di facciata tensionati.*

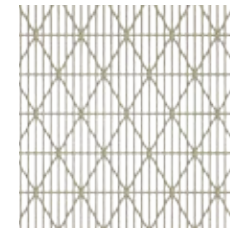
*Il nome di questa texture deriva da una  
richiesta effettuata da Vivienne Westwood.*

2

## Pattern Scale

Vivienne can be scaled  
as you prefer.

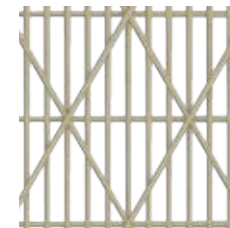
from 90%  
(more privacy)



code: **90**



up to 500%  
(more visibility)

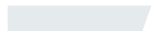


code: **500**

3

## Colour

 Volcano (**V**)

 Fiberglass (**F**)

 Basalt (**B**)

 Technora (**T**)

 Zylon (**Z**)

 Carbon (**C**)

=

## Your Choice

**VIVIENNE V 100**  
*\*100 = i-Mesh standard aperture*

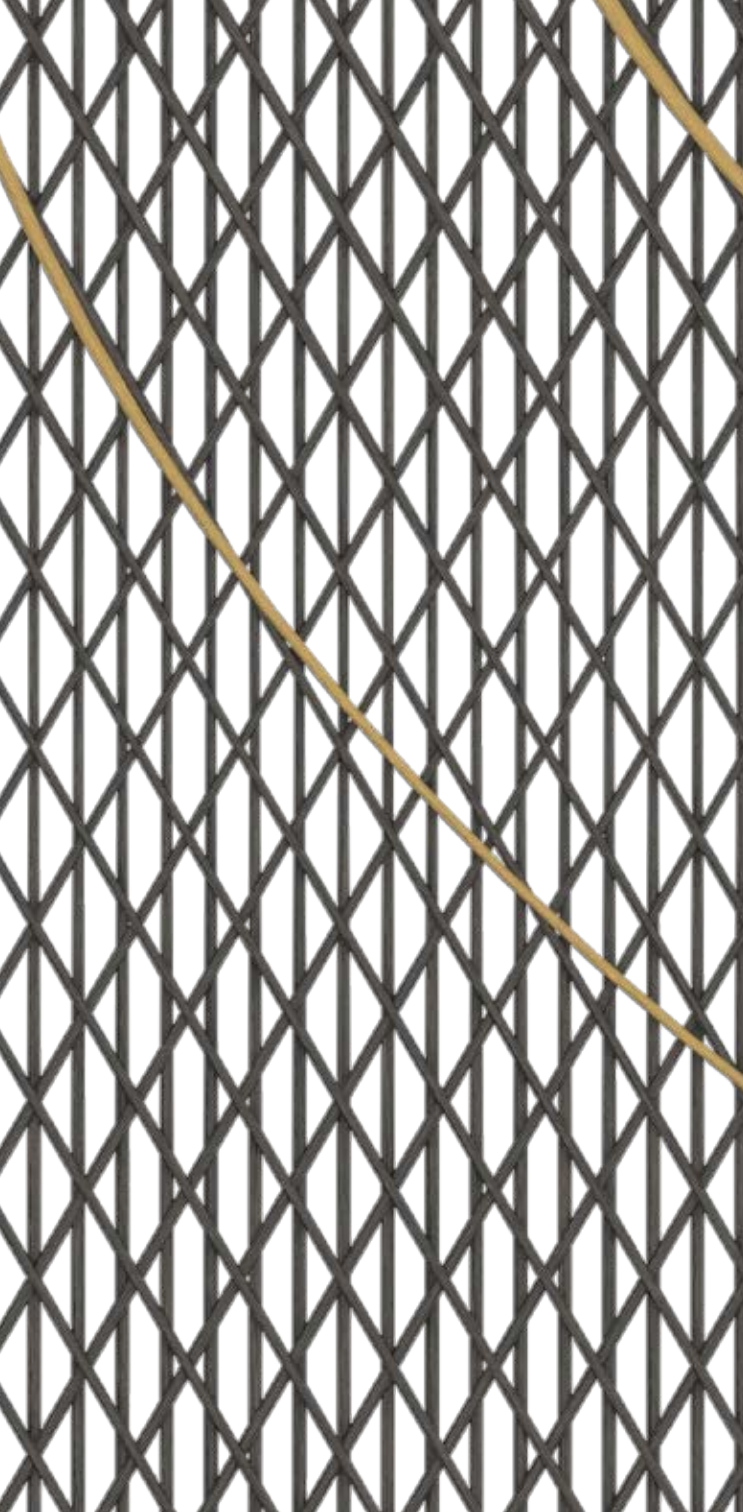
**VIVIENNE F 100**

**VIVIENNE B 100**

**VIVIENNE T 100**

**VIVIENNE Z 100**

**VIVIENNE V 100**



1

Design

2

Pattern Scale

3

Fibres

=

Your Choice

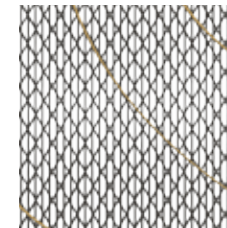
# BLOCKER

**Blocker satisfies the privacy needs: usually made in carbon fibre, this geometry with low permeability is the most darkening within the i-Mesh patterns.**

*Per chi è alla ricerca del massimo della privacy, solitamente realizzato in fibra di carbonio, è caratterizzato da una bassa permeabilità.*

Blocker can be scaled as you prefer.

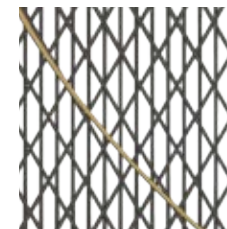
from 90%  
(more privacy)



code: **90**



up to 200%  
(more visibility)



Carbon **(C)**



Zylon **(Z)**

**BLOCKER CZ 100**  
*\*100 = i-Mesh standard aperture*



Carbon **(C)**

**BLOCKER C 100**



Basalt **(B)**



Zylon **(Z)**

**BLOCKER BZ 100**



Basalt **(B)**

**BLOCKER B 100**

**i-M**

**constantly evolving**

visit [www.i-mesh.eu](http://www.i-mesh.eu)

follow **i-Mesh** on facebook, instagram, linkedin